

Calendar of Events

August- 5th Welcome Back Event

September- 17th All Pros Dad Kick-off
"Donuts with GrownUps"

October- 7th STEAM Family Night
9th Community Yard Sale

29th-Storybook Character Parade

November- 5th Fall Festival & Book Fair;
11th Veteran's Day Celebration; Canned
Food Drive; 19th Annual Turkey Trot STEAM
Day

December- 2nd STEAM Family Night;
17th Winter Wonderland Family Night

February- 3rd STEAM Family Night/
Kindergarten Round Up; 18th Wildcat Run

March- 2nd Read Across America day;
Movie Night;

April- 1st Volunteer & Business Partner
Appreciation Breakfast; 7th STEAM Family
Night;

May- 6th Muffins in the Morning; 19th
Spring Art Showcase; 20th Rocket Launch;
Fifth Grade Ceremony; KG Moving Up Cere-
mony;

Uncommon Kids Saturday Funday is held
the 2nd Saturday of each month from 9-11.



Thank you 2020-21
Business and Community
Partners

Bayside Community Church · Bay Village
Retirement Community · Beachy Properties
Church of the Palms · Daquiri Deck · Dr.
Freeman · Dr. McAninch · Hope City Church
· Kiwanis Club of Siesta Key · Kona Ice ·
Manasota Track Club · Purplebol · Temple
Emanu-El Starfish Initiative · Uncommon
Kids

Wilkinson Elementary School

3400 Wilkinson Road
Sarasota, Florida 34231
Phone: (941) 361-6477
Fax: (941) 316-1877

For more information please contact
Caty Kozdemba, Business Partner
Coordinator

(Catherine.Caesar@sarasotacountyschools.net)
or Susan Nations, Principal
[http://sarasotacountyschools.net/
schools/wilkinson](http://sarasotacountyschools.net/schools/wilkinson)

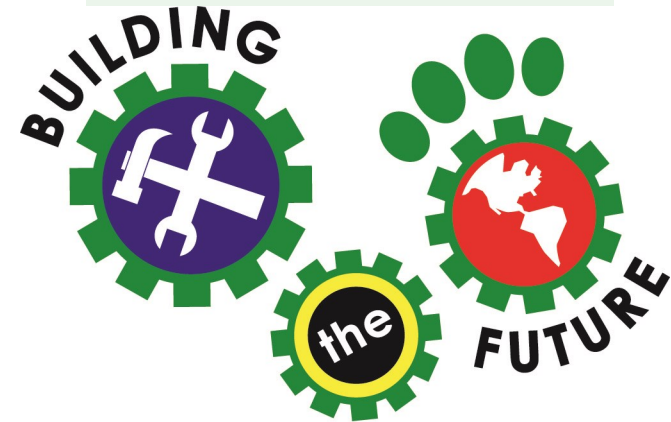


@WilkinsonSCS
#WilkinsonSCS



Wilkinson Elementary School

Business Partner Program



Wilkinson Elementary

Celebrating Successful Community
Partnerships and Building the
Future Together

2021-2022 School Year

Partnering with Education



About Wilkinson Elementary School

Wilkinson Elementary is a K-5 school located in central Sarasota. Our school is a Title 1 school with an approximate enrollment of 500 students. 80% of our students receive free/reduced lunch.

The Purpose of Business Partnerships

Business and community partnerships promote education at Wilkinson Elementary by enhancing student achievement through cooperative efforts among parents, schools, businesses, and community members.

Business Partners Can Help

- ◆ Volunteer and/or mentor students
- ◆ Provide resource materials to the school
- ◆ Provide “appreciation” for outstanding staff and students
- ◆ Provide financial contributions and grants for special programs and events

Wilkinson Can Help Business Partners

- ◆ Recognition in school publications/social media
- ◆ Reach a new market demographic
- ◆ Receive tax deductions on in-kind and financial donations
- ◆ Provide employees the opportunity to be involved in the community

Sponsorship Levels

Friend of Wilkinson

Contributions of promotional materials and/or resources

- ◆ Recognition list posted in the school office
- ◆ Recognition on school website

Bronze Level

Contributions of \$150 and above

- ◆ Recognition list posted in the school office
- ◆ Recognition on school website
- ◆ Recognition Certificate
- ◆ *Invitation to yearly Volunteer and Business Partner Reception

Silver Level

Contributions of \$300 and above

- ◆ Recognition list posted in the school office
- ◆ Hyperlink on our school website
- ◆ Flyer distribution at Meet the Teacher
- ◆ Recognition Certificate
- ◆ *Invitation to our yearly Volunteer and Business Partner Reception
- ◆ 1 flyer distributed annually to families (must be submitted for approval)
- ◆ Recognition in digital print and social media

Gold Level

Contributions of \$500 and above

- ◆ Recognition on list posted in the school office
- ◆ Hyperlink on school website and social media
- ◆ Flyer distribution at Meet the Teacher
- ◆ Recognition Certificate
- ◆ Invitation to yearly Volunteer and Business Partner Reception
- ◆ 2 flyers distributed annually to families (digital or print— must be submitted for approval)
- ◆ 1 week marquee acknowledgement
- ◆ 2 x 3 Car line sign (provided by Wilkinson)
- ◆ Business Name listed in yearbook
- ◆ *Business name listed on Wildcat Run T-Shirt

Wildcat Level

Contributions of \$1000 and above

- ◆ Recognition list posted in the school office
- ◆ Hyperlink logo on school website/social media
- ◆ Flyer distribution at Meet the Teacher
- ◆ Recognition Certificate
- ◆ *Invitation to yearly Volunteer and Business Partner Reception
- ◆ 2 flyers distributed annually to families (digital or print—must be submitted for approval)
- ◆ 2 week digital logo marquee placement
- ◆ Banner displayed on Wilkinson Road (3 x 5— provided by the Business) for the year
- ◆ Business Card ad in yearbook
- ◆ *Business Card size ad on our Wildcat Run T-Shirt

