

THE SCHOOL BOARD OF SARASOTA COUNTY, SARASOTA FLORIDA
FINANCIAL ADVISORY COMMITTEE MEETING MINUTES
02/21/2019

ATTENDEES: Murray Blueglass, John Cranor, Gabriel Hament, Paula Ippolito, Dan DeLeo, Dr. Louis Robison, Pam Truitt

STAFF: Mitsi Corcoran, Christa Curtner

ABSENT: Todd Bowden, Scott Pinkerton

GUESTS: Barry Dubin, Pat Gardner

HANDOUTS: Budget Calendar 2019-20, FEFP Calculation Comparison, FEFP 2019-20 Governor Recommended Calculation, FAC Board Presentation March 2018

Meeting called to order at 8:32 a.m.

- I. Welcome**
- II. Budget Calendar 2019-2020 and FEFP Comparison**

Christa Curtner presented information from the handouts provided. Mrs. Curtner informed the committee members that the 2019-20 Budget calendar was approved when it went to the Board on February 19, 2019. Because of how the budget is projected based on results of operation through Dec 31st, we are coming in right on budget. Based on this information, Mrs. Curtner will be running reports for January to see how it is trending. The 2018/19 budget showed that we would be running at a 13-million-dollar deficit and we are coming in right at this number. It was originally projected to have a 7.73% fund balance and now with the end of the year it is trending at 7.8%.

The information received from the Governor makes the comparison between our current year (the third calculation) and what the governor is proposing. There is an unweighted FTE increase of 343 FTE which is higher than the number originally submitted to the state. The anticipated growth will be coming from the opening of 2 new charter schools, The Dreamer's Academy for ESOL and SCF Collegiate School in Venice. It is anticipated to bring in students from different districts such as Manatee and Charlotte Counties. The State projects our school taxable value to go up approximately 6%. The Governor's budget proposes a \$50 increase on the Based Student Allocation (BSA) and some adjustments were made in the FEFP. The Best and Brightest is included in the FEFP calculation in the Governor's budget. Mitsi Corcoran explains further that the Best and Brightest was previously 100% State funded and now it is part of our formula of which 90% comes locally, 10% comes from the State. If we go with the Governor's budget, the addition of \$262.65 per student consists of \$152.17 for Best and Brightest, \$63.29 is the Discretionary increase and the remaining amount is \$47 which is less than the increase on the BSA

Mrs. Curtner gave the committee information on Senate Bill 1028. This bill is about how district schools need to share all voted referendum funding including the County's voted sales tax referendum. So, we would share the county sales tax (we get ¼ of that penny)

we receive with all schools including charter, Hope scholarship students, etc. The language was not clear, so we are unsure if school districts will need to also share with private and home-schooled students.

Discussion ensued among members regarding the Governor's recommended budget and the status of teacher salaries.

A request was made for Mrs. Corcoran to forward the language in Senate Bill 1028 to the members of FAC – copy of the bill is attached.

III. Financial Advisory Committee Report

The Financial Advisory Committee's annual presentation to the School Board will be given on March 26th, 2019. The provided handout from March 2018 was used as a guideline to create the new presentation.

Dan Deleo gave a recommendation to make clarification on page 3 to give more specific information on how we are spending referendum funding. John Cranor made proposal to present this information to the community as a follow-up to the Board review. A discussion ensued on the best way to present the information to the individual schools and community. A recommendation was made to include the number of Districts with a voted millage.

After much discussion a motion was made by Mr. DeLeo to approve the Financial Advisory Committee Report subject to the changes made by Mrs. Corcoran and Mr. Cranor. The report will be presented to the Board on March 26th, 2019.

IV. Other

Discussion was brought up regarding teacher salaries and the ongoing teacher shortage. A suggestion was made to obtain an independent salary study. A lengthy discussion ensued.

Dr. Louis Robison informed the committee that this will be his last meeting as he will be moving out of the area. The committee wanted to thank Dr. Robison for his hard work, dedication and knowledge that he shared throughout his many years serving on the Financial Advisory Committee.

Next Financial Advisory Committee meeting will be May 2, 2019 at 8:00 a.m.

Meeting Adjourned.

Respectfully submitted,
Marina Vastag

The School Board of Sarasota County, Florida
Budget Calendar/Guide 2019-2020

Month	Description
October and November	<ul style="list-style-type: none"> • The five-year student enrollment projections are updated with actual student attendance numbers from the state October Student FTE Count submitted to the State for funding. • The five-year student enrollment projections are sent to schools and the appropriate District Directors for modifications and review. • The first quarterly projection report is prepared for all funds based upon the results of the operations for the first quarter of the year.
December	<ul style="list-style-type: none"> • Schools and District Directors submit changes to student enrollment projections for final submission to the State.
January and February	<ul style="list-style-type: none"> • Preliminary budgets are prepared for the General and Capital Funds utilizing updated student projections and new legal mandates. • Administration begins preparing appropriation levels to be allocated to schools and departments. • School Board workshops prioritize the goals and objectives of the preliminary budget. • The second quarter projection report is prepared based upon results of operations for the current year for all funds.
March/April	<ul style="list-style-type: none"> • School and department allocations are reviewed to allow for the release of the budgets to individual schools and departments during the month of March/April. • New Legislation and Legislative budgets are reviewed for impacts upon the School District. • School Board approves allowing schools and departments to prepare a staffing budget. <i>This is contingent upon the agreement of the Legislature and Governor on the Education Appropriations.</i> • School and Department preliminary staffing budgets are released. • The Budget Department completes the position control review necessary for preparation of the vacancy and employee surplus lists for staffing.
May	<ul style="list-style-type: none"> • Human Resources prepares the instructional and classified staffing allowing for both instructional and classified vacancies to be published. • The preliminary budget is adjusted to reflect final Legislative changes.
June	<ul style="list-style-type: none"> • Schools and departments fill position vacancies for the next school year. • The Superintendent's Tentative budget is prepared using the latest data available for all funds.

The School Board of Sarasota County, Florida
Budget Calendar/Guide 2019-2020

Month	Description
July and August	<p>Truth in Millage (TRIM) Legislation</p> <ul style="list-style-type: none"> • The Superintendent’s Tentative Budget for all Funds is presented to the School Board within 24 days after the Property Appraiser certifies the tax roll to the Department of Revenue. • The School District then submits for advertisement the Superintendent’s Tentative budget in the State prescribed format within 29 days of the certification of the tax roll. • The School Board tentatively adopts millage and budget no sooner than 2 days nor later than 5 days after the advertisement of the Tentative budget. • The 5 Day Budget adjustments are made during the last week in August to reflect enrollment changes between the original enrollment projection and the actual students enrolled.
September	<ul style="list-style-type: none"> • The School Board adopts the final millage and budget along with any budget amendments within 65 to 80 days after the certification of the Tax Roll. • Final carry forward allocations are loaded into the respective budgets and all funds are reconciled to the final budget adopted by the School Board.

Truth in Millage Requirements

The School District must comply with Florida Statutes F.S.200.065 and F.S.1011 regarding the budget.

Date	Description
7/23/19 Tuesday 3:00 PM	Superintendent presents Superintendent’s Tentative Budget and requests approval to advertise the intent to adopt a Tentative Budget and millage rates. The advertisement will be on Saturday July 27, 2019. TRIM requires the proposed budget no later than July 24, 2019.
7/30/19 Tuesday 5:15 PM	Required Public Hearing to adopt tentative millage and budget for 2019-2020. TRIM requires no later than August 4, 2019.
9/10/19 Tuesday 5:15 PM	Public Hearing to adopt the final millage and budget for 2019-2020 TRIM requires no later than September 18, 2019.

The School Board of Sarasota County, Florida
Budget Calendar/Guide 2019-2020

Date	Description
Tuesday 2/19/19	School Board workshop - Review the budget calendar for preparation and distribution of the 2019-2020 budget. Review comparisons of FEFP from Governor, House and Senate (if available) and the results of operation through December 31, 2018.
Tuesday 3/05/19	School Board workshop to review the latest Legislative budget information and the estimated impact upon the General Fund Budget for 2019-2020. Update the School Board on the General Fund results of operations through January 31, 2019. Determine if school and department budgets can be released to begin the staffing process.
Tuesday 3/26/19	If the School Board agrees on releasing budgets for the staffing process. Release the department budgets with a return date of April 2nd and school budgets with a return date of April 5th. A special meeting will be called for Human Resources to provide surplus staffing directions via a webinar, and updated seniority listings. School budgets are distributed to the cost center heads. During this time the respective Executive Director must approve all waivers.
Tuesday 4/2/19	Department budgets returned to the budget department.
Friday 4/5/19	School budgets are returned to the Budget Department with the voluntary surplus, voluntary full time to part time, and voluntary lower classification forms necessary to reconcile position control.
Tuesday 4/16/19	School Board Workshop reviewing the latest data from the Legislature on the impact of the 2019-2020 budget.
Friday 4/19/19	Final Date for completion by the Budget Department of surplus and vacancy lists for all cost centers to be delivered to the Human Resources Department.
Wednesday 4/24/19	Employee preference survey opens and closes 5/7/19.
Monday 4/29/19	Human Resources complete data entry and verification of surplus and vacancy data.
Tuesday 4/30/19	Human Resources publish the vacancy and surplus lists.
Through Monday 5/6/19	The last day for changes to the preference placement forms is 5/7/19.
Friday 5/10/19	Trial staffing both instructional and classified.
Tuesday 5/14/19	Instructional Staffing. Note last day for 196-day staff is 5/29/19.
Wednesday 5/15/19	Classified Staffing. Note last day for 220-day staff is 6/18/19, and last day for 186-day staff is 5/24/19.
Wednesday 5/22/19	Instructional staffing results sent to cost centers.
Friday 5/24/19	Classified results sent to cost centers.
Tuesday 5/28/19	Instructional Vacancies are posted and close on Thursday 5/30/19.
Wednesday 6/5/18	Classified vacancies posted. Closing on Monday 6/10/19.

FLORIDA EDUCATION FINANCE PROGRAM
2019-20 - GOVERNOR RECOMMENDED CALCULATION

	2018-19 3rd Calculation	2019-20 Governor's Recommended Calculation	Difference	Difference
STUDENT COUNT				
Unweighted FTE	2,834,821.61	2,842,533.21	7,711.60	0.27%
Weighted FTE	3,091,837.68	3,101,954.36	10,116.68	0.33%
LOCAL TAXES				
School Taxable Value	2,033,794,751,313	2,153,697,774,867	119,903,023,554	5.90%
Required Local Millage	4.075	3.918	(0.157)	-3.85%
.748 Discretionary Millage	0.748	0.748	0.000	0.00%
Total Millage	4.823	4.666	(0.157)	-3.26%
Base Student Allocation	4,204.42	4,254.42	50.00	1.19%
WFTE x BSA x DCDC	13,010,145,930	13,207,607,667	197,461,737	1.52%
Declining Enrollment Supplement	9,375,029	10,182,884	807,855	8.62%
Sparsity Supplement	52,800,000	52,800,000	0	0.00%
Lab School Discretionary Contribution	21,568,345	22,549,359	981,014	4.55%
Safe Schools	161,956,019	211,956,019	50,000,000	30.87%
.748 Millage Compression	241,880,132	257,449,828	15,569,696	6.44%
Supplemental Academic Instruction	713,952,686	715,608,088	1,655,402	0.23%
ESE Guaranteed Allocation	1,067,088,437	1,067,155,366	66,929	0.01%
Reading Instruction Allocation	130,000,000	130,000,000	0	0.00%
Digital Learning Allocation	70,000,000	20,000,000	(50,000,000)	-71.43%
DJJ Supplemental	7,445,780	7,292,669	(153,111)	-2.06%
Instructional Materials	232,934,691	233,568,346	633,655	0.27%
Student Transportation	443,043,407	444,248,623	1,205,216	0.27%
Teachers Classroom Supply Assistance Program	54,143,375	54,143,375	0	0.00%
Mental Health Allocation	69,237,286	79,237,286	10,000,000	14.44%
Federally-Connected Student Supplement	12,998,722	13,592,335	593,613	4.57%
Funding Compression Allocation	56,783,293	0	(56,783,293)	-100.00%
Best and Brightest Teachers and Principals Allocation	0	422,974,000	422,974,000	
Additional Allocation	0	7,999,385	7,999,385	
Virtual Education Contribution	11,326,500	8,062,477	(3,264,023)	-28.82%
TOTAL FEFP	16,366,679,632	16,966,427,707	599,748,075	3.66%
ADJUSTMENTS				
Required Local Taxes	7,713,404,630	7,855,656,386	142,251,756	1.84%
Proration to Funds Available	0	0	0	
LESS ADJUSTMENTS	7,713,404,630	7,855,656,386	142,251,756	1.84%
STATE FEFP	8,653,275,002	9,110,771,321	457,496,319	5.29%
STATE ADJUSTMENTS				
Class Size Reduction Allocation	3,097,618,502	3,106,906,805	9,288,303	0.30%
District Lottery Funds	134,582,877	134,582,877	0	0.00%
STATE FUNDING ADJUSTMENTS	3,232,201,379	3,241,489,682	9,288,303	0.29%
TOTAL STATE FUNDING	11,885,476,381	12,352,261,003	466,784,622	3.93%
LOCAL FUNDING				
Required Local Taxes	7,713,404,630	7,855,656,386	142,251,756	1.84%
.748 Discretionary Local Taxes	1,460,427,333	1,546,527,296	86,099,963	5.90%
TOTAL LOCAL FUNDING	9,173,831,963	9,402,183,682	228,351,719	2.49%
TOTAL FUNDING (State and Local)	21,059,308,344	21,754,444,685	695,136,341	3.30%
State Dollars per Unweighted FTE	4,192.67	4,345.51	152.84	3.65%
Local Dollars per Unweighted FTE	3,236.12	3,307.68	71.56	2.21%
Total Dollars per Unweighted FTE	7,428.79	7,653.19	224.40	3.02%
State Funds as a Percent of Total	56.44%	56.78%	0.34%	0.61%
Local Funds as a Percent of Total	43.56%	43.22%	-0.34%	-0.79%

FLORIDA EDUCATION FINANCE PROGRAM
2019-20 - GOVERNOR RECOMMENDED CALCULATION

Comparison of Unweighted FTE and Total Funds

		K-12 Unweighted FTE Students				K-12 Total Potential Funding			
District	2018-19	2019-20	Difference	Percentage Difference	2018-19	2019-20	Difference	Percentage Difference	
	-1-	-2-	-3-	-4-	-5-	-6-	-7-	-8-	
1 Alachua	29,099.28	29,220.80	121.52	0.42%	209,374,680	215,274,063	5,899,383	2.82%	
2 Baker	4,895.46	4,967.68	72.22	1.48%	36,716,533	38,136,633	1,420,100	3.87%	
3 Bay	27,452.72	27,526.97	74.25	0.27%	203,283,048	210,356,619	7,073,571	3.48%	
4 Bradford	3,078.77	2,816.03	(262.74)	-8.53%	24,159,636	23,229,469	(930,167)	-3.85%	
5 Brevard	72,546.32	72,941.59	395.27	0.54%	531,261,968	550,602,362	19,340,394	3.64%	
6 Broward	267,847.88	267,890.93	43.05	0.02%	1,982,065,102	2,049,024,098	66,958,996	3.38%	
7 Calhoun	2,156.79	2,163.49	6.70	0.31%	17,615,149	17,840,413	225,264	1.28%	
8 Charlotte	15,530.95	15,527.85	(3.10)	-0.02%	118,742,798	122,409,697	3,666,899	3.09%	
9 Citrus	15,054.57	15,114.05	59.48	0.40%	109,801,404	112,484,933	2,683,529	2.44%	
10 Clay	37,796.01	37,659.42	(136.59)	-0.36%	275,573,302	281,091,131	5,517,829	2.00%	
11 Collier	46,897.76	47,372.99	475.23	1.01%	404,794,006	421,847,165	17,053,159	4.21%	
12 Columbia	10,009.93	10,013.49	3.56	0.04%	73,304,021	74,975,627	1,671,606	2.28%	
13 Miami-Dade	346,370.65	341,399.73	(4,970.92)	-1.44%	2,623,427,277	2,682,952,592	59,525,315	2.27%	
14 DeSoto	4,864.45	4,866.34	1.89	0.04%	36,755,106	37,574,265	819,159	2.23%	
15 Dixie	2,204.36	2,209.20	4.84	0.22%	16,797,211	17,022,453	225,242	1.34%	
16 Duval	129,150.22	129,792.28	642.06	0.50%	948,193,386	985,669,339	37,475,953	3.95%	
17 Escambia	39,480.84	39,315.19	(165.65)	-0.42%	287,683,111	293,970,319	6,287,208	2.19%	
18 Flagler	12,821.70	12,760.67	(61.03)	-0.48%	92,579,916	93,786,909	1,206,993	1.30%	
19 Franklin	1,265.04	1,290.26	25.22	1.99%	10,567,511	10,880,639	313,128	2.96%	
20 Gadsden	4,857.29	4,390.17	(467.12)	-9.62%	36,455,580	34,553,227	(1,902,353)	-5.22%	
21 Gilchrist	2,623.86	2,670.75	46.89	1.79%	21,473,939	22,120,929	646,990	3.01%	
22 Glades	1,766.08	1,778.75	12.67	0.72%	14,527,163	14,762,052	234,889	1.62%	
23 Gulf	1,893.76	1,832.68	(61.08)	-3.23%	15,277,436	15,084,314	(193,122)	-1.26%	
24 Hamilton	1,540.35	1,526.51	(13.84)	-0.90%	12,463,749	12,495,570	31,821	0.26%	
25 Hardee	5,074.01	4,950.01	(124.00)	-2.44%	37,192,676	36,932,399	(260,277)	-0.70%	
26 Hendry	7,091.01	7,022.70	(68.31)	-0.96%	53,445,569	54,465,376	1,019,607	1.91%	
27 Hernando	22,729.30	22,916.33	187.03	0.82%	166,275,764	171,891,419	5,615,655	3.38%	
28 Highlands	12,295.35	12,354.38	59.03	0.48%	88,579,895	90,531,689	1,951,794	2.20%	
29 Hillsborough	215,735.95	216,797.89	1,061.94	0.49%	1,582,403,387	1,635,564,854	53,161,467	3.36%	
30 Holmes	3,135.94	3,104.74	(31.20)	-0.99%	24,340,996	24,473,241	132,245	0.54%	
31 Indian River	17,388.26	17,234.43	(153.83)	-0.88%	130,100,801	133,393,605	3,292,804	2.53%	
32 Jackson	6,143.77	6,004.13	(139.64)	-2.27%	47,024,856	47,205,621	180,765	0.38%	
33 Jefferson	742.54	713.39	(29.15)	-3.93%	6,795,354	6,824,167	28,813	0.42%	
34 Lafayette	1,188.11	1,178.69	(9.42)	-0.79%	9,570,558	9,639,298	68,740	0.72%	
35 Lake	43,489.84	43,946.70	456.86	1.05%	313,780,986	324,007,413	10,226,427	3.26%	
36 Lee	92,964.95	93,749.06	784.11	0.84%	701,146,818	728,959,456	27,812,638	3.97%	
37 Leon	33,922.80	33,682.41	(240.39)	-0.71%	248,640,140	254,539,423	5,899,283	2.37%	
38 Levy	5,421.54	5,388.92	(32.62)	-0.60%	42,156,548	42,935,127	778,579	1.85%	
39 Liberty	1,295.48	1,275.45	(20.03)	-1.55%	11,170,504	11,085,569	(84,935)	-0.76%	
40 Madison	2,569.43	2,514.21	(55.22)	-2.15%	19,709,706	19,579,502	(130,204)	-0.66%	
41 Manatee	48,759.62	49,209.54	449.92	0.92%	354,672,684	369,091,433	14,418,749	4.07%	
42 Marion	42,402.91	42,260.15	(142.76)	-0.34%	302,019,123	306,911,573	4,892,450	1.62%	
43 Martin	18,332.44	18,087.60	(244.84)	-1.34%	145,072,592	147,611,353	2,538,761	1.75%	
44 Monroe	8,203.70	8,283.21	79.51	0.97%	78,703,743	81,636,836	2,933,093	3.73%	
45 Nassau	12,080.31	12,328.03	247.72	2.05%	90,103,911	94,572,167	4,468,256	4.96%	
46 Okaloosa	31,361.87	31,684.47	322.60	1.03%	233,975,276	243,357,923	9,382,647	4.01%	
47 Okeechobee	6,417.01	6,447.12	30.11	0.47%	47,818,904	49,342,818	1,523,914	3.19%	
48 Orange	206,907.98	210,018.18	3,110.20	1.50%	1,524,897,805	1,596,118,920	71,221,115	4.67%	
49 Osceola	67,629.32	69,498.02	1,868.70	2.76%	483,281,340	506,543,133	23,261,793	4.81%	
50 Palm Beach	190,304.61	190,967.37	662.76	0.35%	1,492,505,673	1,549,538,602	57,032,929	3.82%	
51 Pasco	74,452.62	75,500.46	1,047.84	1.41%	546,134,609	570,302,899	24,168,290	4.43%	
52 Pinellas	99,201.14	98,328.84	(872.30)	-0.88%	739,201,416	763,256,432	24,055,016	3.25%	
53 Polk	104,185.41	104,630.64	445.23	0.43%	750,544,931	768,537,806	17,992,875	2.40%	
54 Putnam	10,694.84	10,650.37	(44.47)	-0.42%	79,023,697	80,712,867	1,689,170	2.14%	
55 St. Johns	41,121.45	42,909.26	1,787.81	4.35%	302,985,668	324,257,349	21,271,681	7.02%	
56 St. Lucie	40,483.77	40,951.73	467.96	1.16%	296,545,953	307,664,697	11,118,744	3.75%	
57 Santa Rosa	27,850.53	28,358.90	508.37	1.83%	203,871,016	212,583,180	8,712,164	4.27%	
58 Sarasota	42,975.37	43,319.07	343.70	0.80%	347,149,047	361,303,193	14,154,146	4.08%	
59 Seminole	67,356.47	67,353.93	(2.54)	0.00%	483,217,625	493,891,480	10,673,855	2.21%	
60 Sumter	8,567.28	8,627.27	59.99	0.70%	64,867,323	67,287,292	2,419,969	3.73%	
61 Suwannee	5,845.14	5,735.87	(109.27)	-1.87%	41,777,105	41,505,669	(271,436)	-0.65%	
62 Taylor	2,552.71	2,537.42	(15.29)	-0.60%	19,907,602	20,099,179	191,577	0.96%	
63 Union	2,283.26	2,306.97	23.71	1.04%	17,643,697	18,047,762	404,065	2.29%	
64 Volusia	62,019.03	62,339.70	320.67	0.52%	446,588,711	459,108,755	12,520,044	2.80%	
65 Wakulla	5,026.85	4,981.09	(45.76)	-0.91%	37,175,059	37,318,679	143,620	0.39%	
66 Walton	9,597.86	9,860.08	262.22	2.73%	77,013,610	81,296,236	4,282,626	5.56%	
67 Washington	3,376.30	3,439.22	62.92	1.86%	26,522,092	27,579,590	1,057,498	3.99%	
69 FAMU Lab School	628.94	627.87	(1.07)	-0.17%	5,373,924	5,475,725	101,801	1.89%	
70 FAU Palm Beach	1,143.36	1,143.28	(0.08)	-0.01%	9,538,189	9,673,264	135,075	1.42%	
71 FAU St Lucie	1,412.75	1,414.26	1.51	0.11%	10,555,509	10,672,648	117,139	1.11%	
72 FSU Broward	713.00	713.00	0.00	0.00%	5,828,913	5,986,516	157,603	2.70%	
73 FSU Leon	1,742.39	1,741.20	(1.19)	-0.07%	13,234,079	13,307,342	73,263	0.55%	
74 UF Lab School	1,153.20	1,142.01	(11.19)	-0.97%	9,311,270	9,368,552	57,282	0.62%	
75 Fla Virtual School	35,644.85	35,255.82	(389.03)	-1.09%	187,018,658	190,310,038	3,291,380	1.76%	
Total	2,834,821.61	2,842,533.21	7,711.60	0.27%	21,059,308,344	21,754,444,685	695,136,341	3.30%	

FLORIDA EDUCATION FINANCE PROGRAM
2019-20 - GOVERNOR RECOMMENDED CALCULATION

Total Potential and Total Potential per Unweighted FTE

District	Total Potential Funds				Total Potential Funds per Unweighted FTE Student			
	2018-19	2019-20	Difference	Percentage	2018-19	2019-20	Difference	Percentage
	-1-	-2-	-3-	-4-	-5-	-6-	-7-	-8-
1 Alachua	209,374,680	215,274,063	5,899,383	2.82%	7,195.18	7,367.15	171.97	2.39%
2 Baker	36,716,533	38,136,633	1,420,100	3.87%	7,500.12	7,676.95	176.83	2.36%
3 Bay	203,283,048	210,356,619	7,073,571	3.48%	7,404.84	7,641.84	237.00	3.20%
4 Bradford	24,159,636	23,229,469	(930,167)	-3.85%	7,847.17	8,249.01	401.84	5.12%
5 Brevard	531,261,968	550,602,362	19,340,394	3.64%	7,323.07	7,548.54	225.47	3.08%
6 Broward	1,982,065,102	2,049,024,098	66,958,996	3.38%	7,399.97	7,648.73	248.76	3.36%
7 Calhoun	17,615,149	17,840,413	225,264	1.28%	8,167.30	8,246.13	78.83	0.97%
8 Charlotte	118,742,798	122,409,697	3,666,899	3.09%	7,645.56	7,883.24	237.68	3.11%
9 Citrus	109,801,404	112,484,933	2,683,529	2.44%	7,293.56	7,442.41	148.85	2.04%
10 Clay	275,573,302	281,091,131	5,517,829	2.00%	7,291.07	7,464.03	172.96	2.37%
11 Collier	404,794,006	421,847,165	17,053,159	4.21%	8,631.41	8,904.80	273.39	3.17%
12 Columbia	73,304,021	74,975,627	1,671,606	2.28%	7,323.13	7,487.46	164.33	2.24%
13 Miami-Dade	2,623,427,277	2,682,952,592	59,525,315	2.27%	7,574.05	7,858.68	284.63	3.76%
14 DeSoto	36,755,106	37,574,265	819,159	2.23%	7,555.86	7,721.26	165.40	2.19%
15 Dixie	16,797,211	17,022,453	225,242	1.34%	7,619.99	7,705.26	85.27	1.12%
16 Duval	948,193,386	985,669,339	37,475,953	3.95%	7,341.79	7,594.21	252.42	3.44%
17 Escambia	287,683,111	293,970,319	6,287,208	2.19%	7,286.65	7,477.27	190.62	2.62%
18 Flagler	92,579,916	93,786,909	1,206,993	1.30%	7,220.56	7,349.69	129.13	1.79%
19 Franklin	10,567,511	10,880,639	313,128	2.96%	8,353.50	8,432.90	79.40	0.95%
20 Gadsden	36,455,580	34,553,227	(1,902,353)	-5.22%	7,505.33	7,870.59	365.26	4.87%
21 Gilchrist	21,473,939	22,120,929	646,990	3.01%	8,184.10	8,282.67	98.57	1.20%
22 Glades	14,527,163	14,762,052	234,889	1.62%	8,225.65	8,299.12	73.47	0.89%
23 Gulf	15,277,436	15,084,314	(193,122)	-1.26%	8,067.25	8,230.74	163.49	2.03%
24 Hamilton	12,463,749	12,495,570	31,821	0.26%	8,091.50	8,185.71	94.21	1.16%
25 Hardee	37,192,676	36,932,399	(260,277)	-0.70%	7,330.04	7,461.08	131.04	1.79%
26 Hendry	53,445,569	54,465,176	1,019,607	1.91%	7,537.09	7,755.59	218.50	2.90%
27 Hernando	166,275,764	171,891,419	5,615,655	3.38%	7,315.48	7,500.83	185.35	2.53%
28 Highlands	88,579,895	90,531,689	1,951,794	2.20%	7,204.34	7,327.90	123.56	1.72%
29 Hillsborough	1,582,403,387	1,635,564,854	53,161,467	3.36%	7,334.91	7,544.19	209.28	2.85%
30 Holmes	24,340,996	24,473,241	132,245	0.54%	7,761.95	7,882.54	120.59	1.55%
31 Indian River	130,100,801	133,393,605	3,292,804	2.53%	7,482.11	7,739.95	257.84	3.45%
32 Jackson	47,024,856	47,205,621	180,765	0.38%	7,654.07	7,862.19	208.12	2.72%
33 Jefferson	6,795,354	6,824,167	28,813	0.42%	9,151.50	9,565.83	414.33	4.53%
34 Lafayette	9,570,558	9,639,298	68,740	0.72%	8,055.28	8,177.98	122.70	1.52%
35 Lake	313,780,986	324,007,413	10,226,427	3.26%	7,215.04	7,372.74	157.70	2.19%
36 Lee	701,146,818	728,959,456	27,812,638	3.97%	7,542.06	7,775.65	233.59	3.10%
37 Leon	248,640,140	254,539,423	5,899,283	2.37%	7,329.59	7,557.04	227.45	3.10%
38 Levy	42,156,548	42,935,127	778,579	1.85%	7,775.75	7,967.30	191.55	2.46%
39 Liberty	11,170,504	11,085,569	(84,935)	-0.76%	8,622.68	8,691.50	68.82	0.80%
40 Madison	19,709,706	19,579,502	(130,204)	-0.66%	7,670.85	7,787.54	116.69	1.52%
41 Manatee	354,672,684	369,091,433	14,418,749	4.07%	7,273.90	7,500.40	226.50	3.11%
42 Marion	302,019,123	306,911,573	4,892,450	1.62%	7,122.60	7,262.43	139.83	1.96%
43 Martin	145,072,592	147,611,353	2,538,761	1.75%	7,913.44	8,160.91	247.47	3.13%
44 Monroe	78,703,743	81,636,836	2,933,093	3.73%	9,593.69	9,855.70	262.01	2.73%
45 Nassau	90,103,911	94,572,167	4,468,256	4.96%	7,458.74	7,671.31	212.57	2.85%
46 Okaloosa	233,975,276	243,357,923	9,382,647	4.01%	7,460.50	7,680.67	220.17	2.95%
47 Okeechobee	47,818,904	49,342,818	1,523,914	3.19%	7,451.90	7,653.47	201.57	2.70%
48 Orange	1,524,897,805	1,596,118,920	71,221,115	4.67%	7,369.93	7,599.91	229.98	3.12%
49 Osceola	483,281,340	506,543,133	23,261,793	4.81%	7,146.03	7,288.60	142.57	2.00%
50 Palm Beach	1,492,505,673	1,549,538,602	57,032,929	3.82%	7,842.72	8,114.15	271.43	3.46%
51 Pasco	546,134,609	570,302,899	24,168,290	4.43%	7,335.33	7,553.63	218.30	2.98%
52 Pinellas	739,201,416	763,256,432	24,055,016	3.25%	7,451.54	7,762.28	310.74	4.17%
53 Polk	750,544,931	768,537,806	17,992,875	2.40%	7,203.94	7,345.25	141.31	1.96%
54 Putnam	79,023,697	80,712,867	1,689,170	2.14%	7,388.96	7,578.41	189.45	2.56%
55 St. Johns	302,985,668	324,257,349	21,271,681	7.02%	7,368.07	7,556.82	188.75	2.56%
56 St. Lucie	296,545,953	307,664,697	11,118,744	3.75%	7,325.06	7,512.86	187.80	2.56%
57 Santa Rosa	203,871,016	212,583,180	8,712,164	4.27%	7,320.18	7,496.17	175.99	2.40%
58 Sarasota	347,149,047	361,303,193	14,154,146	4.08%	8,077.86	8,340.51	262.65	3.25%
59 Seminole	483,217,625	493,891,480	10,673,855	2.21%	7,174.03	7,332.78	158.75	2.21%
60 Sumter	64,867,323	67,287,292	2,419,969	3.73%	7,571.52	7,799.37	227.85	3.01%
61 Suwannee	41,777,105	41,505,669	(271,436)	-0.65%	7,147.32	7,236.16	88.84	1.24%
62 Taylor	19,907,602	20,099,179	191,577	0.96%	7,798.61	7,921.11	122.50	1.57%
63 Union	17,643,697	18,047,762	404,065	2.29%	7,727.41	7,823.15	95.74	1.24%
64 Volusia	446,588,711	459,108,755	12,520,044	2.80%	7,200.83	7,364.63	163.80	2.27%
65 Wakulla	37,175,059	37,318,679	143,620	0.39%	7,395.30	7,492.07	96.77	1.31%
66 Walton	77,013,610	81,296,236	4,282,626	5.56%	8,024.04	8,244.99	220.95	2.75%
67 Washington	26,522,092	27,579,590	1,057,498	3.99%	7,855.37	8,019.14	163.77	2.08%
69 FAMU Lab School	5,373,924	5,475,725	101,801	1.89%	8,544.41	8,721.11	176.70	2.07%
70 FAU Palm Beach	9,538,189	9,673,264	135,075	1.42%	8,342.24	8,460.98	118.74	1.42%
71 FAU St Lucie	10,555,509	10,672,648	117,139	1.11%	7,471.60	7,546.45	74.85	1.00%
72 FSU Broward	5,828,913	5,986,516	157,603	2.70%	8,175.19	8,396.24	221.05	2.70%
73 FSU Leon	13,234,079	13,307,342	73,263	0.55%	7,595.36	7,642.63	47.27	0.62%
74 UF Lab School	9,311,270	9,368,552	57,282	0.62%	8,074.29	8,203.56	129.27	1.60%
75 Fla Virtual School	187,018,658	190,310,038	3,291,380	1.76%	5,246.72	5,397.98	151.26	2.88%
Total	21,059,308,344	21,754,444,685	695,136,341	3.30%	7,428.79	7,653.19	224.40	3.02%

FLORIDA EDUCATION FINANCE PROGRAM
2019-20 - GOVERNOR RECOMMENDED CALCULATION

By District Summary Page 1

District	Unweighted FTE	Weighted FTE	\$4,254.42 Times Weighted FTE	District Cost Differential	Base Funding	Declining Enrollment Supplement	Sparsity Supplement	Lab School Discretionary Contribution	Additional Allocation	Mental Health Allocation	Distance Learning Allocation
	-1-	-2-	-3-	-4-	-5-	-6-	-7-	-8-	-9-	-10-	-11-
1 Alachua	29,220.80	31,572.84	134,324,122	0.9726	130,643,641	0	0	0	95,858	848,791	269,608
2 Baker	4,967.68	5,319.21	22,630,153	0.9754	22,073,451	0	723,500	0	18,056	227,298	253,333
3 Bay	27,526.97	31,264.33	133,011,591	0.9673	128,662,112	0	0	0	89,002	805,386	268,471
4 Bradford	2,816.03	3,044.76	12,953,688	0.9709	12,576,736	286,261	1,105,107	0	8,963	172,162	251,890
5 Brevard	72,941.59	79,811.89	339,553,301	0.9875	335,308,885	0	0	0	216,872	1,969,149	298,945
6 Broward	267,890.93	292,606.64	1,244,871,541	1.0219	1,272,134,228	0	0	0	731,668	6,964,782	429,759
7 Calhoun	2,163.49	2,354.19	10,015,713	0.9335	9,349,668	0	1,727,317	0	6,958	155,440	251,452
8 Charlotte	15,527.85	16,987.85	72,273,449	0.9822	70,986,982	3,524	0	0	44,832	497,906	260,419
9 Citrus	15,114.05	16,174.52	68,813,201	0.9491	65,310,609	0	2,114,883	0	48,931	487,302	260,142
10 Clay	37,659.42	41,087.28	174,802,546	0.9918	173,369,165	155,287	0	0	101,128	1,065,033	275,270
11 Collier	47,372.99	52,663.93	224,054,477	1.0405	233,128,683	0	0	0	114,567	1,313,946	281,788
12 Columbia	10,013.49	10,559.66	44,925,229	0.9495	42,656,505	0	1,405,083	0	37,016	356,599	256,719
13 Miami-Dade	341,399.73	373,439.83	1,588,769,882	1.0180	1,617,367,740	5,816,511	0	0	820,067	8,848,466	479,084
14 DeSoto	4,866.34	5,129.16	21,821,601	0.9720	21,210,596	0	737,932	0	15,667	224,701	253,265
15 Dixie	2,209.20	2,341.11	9,960,065	0.9302	9,264,852	0	1,083,798	0	7,570	156,611	251,482
16 Duval	129,792.28	140,642.53	598,352,392	1.0106	604,694,927	0	0	0	432,918	3,425,964	337,092
17 Escambia	39,315.19	42,779.75	182,003,024	0.9729	177,070,742	184,366	0	0	132,117	1,107,463	276,381
18 Flagler	12,760.67	13,536.83	57,591,360	0.9537	54,924,880	64,899	1,214,229	0	37,524	426,996	258,563
19 Franklin	1,290.26	1,395.48	5,936,958	0.9291	5,516,028	0	184,574	0	4,332	133,063	250,866
20 Gadsden	4,390.17	4,732.50	20,134,043	0.9511	19,149,488	502,757	868,034	0	13,429	212,499	252,946
21 Gilchrist	2,670.75	2,938.51	12,501,656	0.9470	11,839,068	0	1,938,715	0	8,205	168,439	251,792
22 Glades	1,778.75	1,879.61	7,996,650	0.9770	7,812,727	0	1,034,122	0	5,998	145,581	251,194
23 Gulf	1,832.68	2,032.88	8,648,725	0.9391	8,122,018	66,593	1,109,855	0	5,588	146,963	251,230
24 Hamilton	1,526.51	1,613.56	6,864,762	0.9282	6,371,872	14,258	983,569	0	5,077	139,117	251,024
25 Hardee	4,950.01	5,229.51	22,248,532	0.9621	21,405,313	132,550	718,497	0	15,784	226,845	253,322
26 Hendry	7,022.70	7,502.17	31,917,382	0.9895	31,582,249	75,822	2,044,179	0	20,859	279,959	254,712
27 Hernando	22,916.33	24,604.44	104,677,622	0.9704	101,579,164	0	2,180,594	0	73,789	687,237	265,377
28 Highlands	12,354.38	13,094.22	55,708,311	0.9483	52,828,191	0	2,730,913	0	38,659	416,585	258,290
29 Hillsborough	216,797.89	236,729.66	1,007,147,400	1.0074	1,014,600,291	0	0	0	641,213	5,655,508	395,474
30 Holmes	3,104.74	3,238.05	13,776,025	0.9374	12,913,646	32,121	2,423,928	0	9,973	179,560	252,083
31 Indian River	17,234.43	18,623.78	79,233,382	1.0001	79,241,305	174,711	0	0	51,018	541,637	261,565
32 Jackson	6,004.13	6,576.24	27,978,087	0.9325	26,089,566	149,850	3,309,034	0	18,921	253,858	254,029
33 Jefferson	713.39	764.60	3,252,930	0.9491	3,087,356	30,786	485,904	0	2,353	118,281	214,496
34 Lafayette	1,178.69	1,270.92	5,407,027	0.9190	4,969,058	9,836	895,046	0	3,254	130,204	250,791
35 Lake	43,946.70	47,763.61	203,206,458	0.9776	198,654,633	0	0	0	140,425	1,226,147	279,489
36 Lee	93,749.06	101,326.52	431,085,573	1.0105	435,611,972	0	0	0	282,226	2,502,346	312,907
37 Leon	33,682.41	36,527.40	155,402,901	0.9714	150,958,378	266,254	0	0	111,377	963,121	272,601
38 Levy	5,388.92	5,861.43	24,936,985	0.9458	23,585,400	35,271	3,202,767	0	18,428	238,093	253,616
39 Liberty	1,275.45	1,442.54	6,137,171	0.9311	5,714,320	22,208	975,850	0	3,335	132,684	250,856
40 Madison	2,514.21	2,630.77	11,192,401	0.9255	10,358,567	56,214	1,078,064	0	8,723	164,427	251,687
41 Manatee	49,209.54	53,235.71	226,487,069	0.9872	223,588,035	0	0	0	140,133	1,361,009	283,020
42 Marion	42,260.15	45,260.73	192,558,155	0.9509	183,103,550	152,459	0	0	127,647	1,182,928	278,357
43 Martin	18,087.60	20,171.86	85,819,565	1.0113	86,789,326	290,119	0	0	44,351	563,500	262,137
44 Monroe	8,283.21	8,978.15	38,196,821	1.0271	39,231,955	0	0	0	23,885	312,260	255,558
45 Nassau	12,328.03	13,272.01	56,464,705	0.9894	55,866,179	0	2,720,037	0	39,749	415,909	258,272
46 Okaloosa	31,684.47	34,443.36	146,536,520	0.9896	145,012,540	0	0	0	103,281	911,924	271,261
47 Okeechobee	6,447.12	6,822.68	29,026,546	0.9769	28,356,033	0	613,468	0	15,720	265,209	254,326
48 Orange	210,018.18	234,768.29	998,802,908	1.0054	1,004,196,444	0	0	0	569,625	5,481,776	390,925
49 Osceola	69,498.02	75,730.91	322,191,098	0.9868	317,938,176	0	0	0	172,245	1,880,907	296,634
50 Palm Beach	190,967.37	212,744.92	905,106,243	1.0430	944,025,811	0	0	0	480,997	4,993,593	378,142
51 Pasco	75,500.46	82,484.73	350,924,685	0.9858	345,941,554	0	0	0	236,682	2,034,721	300,662
52 Pinellas	98,328.84	107,562.74	457,617,072	1.0026	458,806,876	999,428	0	0	278,255	2,619,705	315,980
53 Polk	104,630.64	112,361.51	478,033,055	0.9708	464,074,490	0	0	0	306,384	2,781,190	320,209
54 Putnam	10,650.37	11,283.09	48,003,004	0.9616	46,159,689	47,519	3,023,698	0	31,553	372,919	257,147
55 St. Johns	42,909.26	47,276.89	201,135,746	1.0013	201,397,222	0	0	0	130,956	1,199,562	278,793
56 St. Lucie	40,951.73	43,719.32	186,000,349	0.9952	185,107,547	0	0	0	117,460	1,149,400	277,479
57 Santa Rosa	28,358.90	30,882.17	131,385,722	0.9713	127,614,952	0	0	0	88,491	826,705	269,029
58 Sarasota	43,319.07	48,102.97	204,650,238	1.0058	205,837,209	0	0	0	119,364	1,210,064	279,068
59 Seminole	67,353.93	72,857.15	309,964,916	0.9940	308,105,127	2,893	0	0	199,153	1,825,964	295,195
60 Sumter	8,627.27	9,107.92	38,748,917	0.9625	37,295,833	0	0	0	27,804	321,076	255,789
61 Suwannee	5,735.87	6,076.01	25,849,898	0.9338	24,138,635	113,525	2,159,561	0	17,992	246,983	253,849
62 Taylor	2,537.42	2,777.06	11,814,780	0.9266	10,947,575	16,285	1,127,670	0	9,022	165,022	251,703
63 Union	2,306.97	2,459.74	10,464,767	0.9623	10,070,245	0	1,095,004	0	8,268	159,117	251,548
64 Volusia	62,339.70	67,887.22	288,820,747	0.9643	278,509,846	0	0	0	185,012	1,697,473	291,831
65 Wakulla	4,981.09	5,310.51	22,593,140	0.9515	21,497,373	48,797	717,158	0	14,474	227,642	253,342
66 Walton	9,860.08	10,417.08	44,318,633	0.9721	43,082,143	0	0	0	33,288	352,667	256,616
67 Washington	3,439.22	3,784.71	16,101,746	0.9373	15,092,167	0	2,132,673	0	10,099	188,131	252,308
69 FAMU Lab School	627.87	653.22	2,779,072	0.9714	2,699,591	1,148	496,363	252,071	2,705	116,089	188,782
70 FAU Palm Beach	1,143.28	1,170.00	4,977,671	1.0430	5,191,711	90	569,332	911,949	2,592	129,297	250,767
71 FAU St Lucie	1,414.26	1,493.33	6,353,253	0.9952	6,322,757	0	0	611,003	6,786	136,241	250,949
72 FSU Broward	713.00	764.55	3,252,717	1.0219	3,323,952	0	0	415,914	4,834	118,271	214,378
73 FSU Leon	1,741.20	1,822.40	7,753,255	0.9714	7,531,512	1,282	1,018,212	699,040	4,325	144,619	251,168
74 UF Lab School	1,142.01	1,190.17	5,063,483	0.9726	4,924,744	11,928	851,330	477,748	2,573	129,264	250,766
75 Fla Virtual School	35,255.82	35,986.54	153,101,856	1.0000	153,101,856	417,332	0	19,181,634	0	0	0
State	2,842,533.21	3,101,954.36	13,197,016,668		13,207,607,667	10,182,884	52,800,000	22,549,359	7,999,385	79,237,286	20,000,000

FLORIDA EDUCATION FINANCE PROGRAM
2019-20 - GOVERNOR RECOMMENDED CALCULATION

By District Summary Page 3

District	Gross State & Local FEFP -1-	Required Local Effort Taxes -2-	Gross State FEFP -3-	Net State FEFP -4-	Class Size Categorical Funds -5-	District Lottery Funds -6-	Total State Funding -7-
1 Alachua	171,293,154	63,833,607	107,459,547	107,459,547	30,768,785	987,972	139,216,304
2 Baker	31,651,064	3,937,198	27,713,866	27,713,866	5,409,067	311,163	33,434,096
3 Bay	166,344,660	62,054,311	104,290,349	104,290,349	30,949,720	1,133,011	136,373,080
4 Bradford	19,270,376	4,055,553	15,214,823	15,214,823	3,094,622	97,454	18,406,899
5 Brevard	435,766,237	166,610,926	269,155,311	269,155,311	79,656,545	2,951,762	351,763,618
6 Broward	1,575,078,174	805,375,668	769,702,506	769,702,506	304,361,363	13,314,522	1,087,378,391
7 Calhoun	15,197,481	1,595,523	13,601,958	13,601,958	2,232,685	95,767	15,930,410
8 Charlotte	90,781,334	73,312,262	17,469,072	17,469,072	16,889,499	728,243	35,086,814
9 Citrus	88,883,288	39,533,877	49,349,411	49,349,411	15,552,212	478,685	65,380,308
10 Clay	229,389,504	46,220,635	183,168,869	183,168,869	40,319,720	2,333,743	225,822,332
11 Collier	293,256,805	263,932,291	29,324,514	29,324,514	55,139,182	2,993,878	87,457,574
12 Columbia	62,065,718	11,669,037	50,396,681	50,396,681	10,493,209	246,526	61,136,416
13 Miami-Dade	2,035,076,844	1,282,584,089	752,492,755	752,492,755	384,240,752	21,062,834	1,157,796,341
14 DeSoto	30,730,741	7,241,123	23,489,618	23,489,618	5,211,015	217,946	28,918,579
15 Dixie	14,284,799	2,133,044	12,151,755	12,151,755	2,277,032	57,204	14,485,991
16 Duval	781,178,918	276,956,411	504,222,507	504,222,507	146,379,072	5,290,494	655,892,073
17 Escambia	235,943,308	78,551,965	157,391,343	157,391,343	42,128,431	1,113,258	200,633,032
18 Flagler	73,422,382	38,708,929	34,713,453	34,713,453	12,944,846	150,216	47,808,515
19 Franklin	8,030,088	7,227,075	803,013	803,013	1,342,302	4,117	2,149,432
20 Gadsden	28,452,711	6,279,112	22,173,599	22,173,599	4,612,239	317,011	27,102,849
21 Gilchrist	18,420,967	3,225,586	15,195,381	15,195,381	2,873,818	206,540	18,275,739
22 Glades	12,291,303	2,568,600	9,722,703	9,722,703	1,953,431	14,883	11,691,017
23 Gulf	11,619,808	7,614,334	4,005,474	4,005,474	1,989,769	6,062	6,001,305
24 Hamilton	10,150,672	3,216,595	6,934,077	6,934,077	1,548,695	157,156	8,639,928
25 Hardee	30,271,588	6,775,318	23,496,270	23,496,270	5,166,678	213,704	28,876,652
26 Hendry	44,918,361	8,481,871	36,436,490	36,436,490	7,684,432	204,573	44,325,495
27 Hernando	139,587,906	39,544,580	100,043,326	100,043,326	24,151,370	640,882	124,835,578
28 Highlands	73,536,084	21,055,836	52,480,248	52,480,248	12,783,337	175,937	65,439,522
29 Hillsborough	1,302,655,263	419,235,198	883,420,065	883,420,065	242,457,185	9,942,027	1,135,819,277
30 Holmes	21,032,529	1,984,662	19,047,867	19,047,867	3,043,541	10,374	22,101,782
31 Indian River	99,168,339	73,289,276	25,879,063	25,879,063	18,922,276	1,052,827	45,854,166
32 Jackson	39,532,214	6,200,105	33,332,109	33,332,109	6,210,061	315,974	39,858,144
33 Jefferson	5,511,829	2,645,534	2,866,295	2,866,295	762,425	56,186	3,684,906
34 Lafayette	8,122,479	1,115,120	7,007,359	7,007,359	1,180,749	120,538	8,308,646
35 Lake	257,121,761	93,192,752	163,929,009	163,929,009	47,507,517	1,531,699	212,968,225
36 Lee	556,702,369	340,581,617	216,120,752	216,120,752	103,460,980	3,840,714	323,422,446
37 Leon	203,338,733	71,046,592	132,292,141	132,292,141	36,195,073	1,483,263	169,970,477
38 Levy	35,707,603	8,123,704	27,583,899	27,583,899	5,627,444	39,594	33,250,937
39 Liberty	9,539,970	1,003,265	8,536,705	8,536,705	1,258,922	88,410	9,884,037
40 Madison	16,303,971	2,852,364	13,451,607	13,451,607	2,529,565	195,652	16,176,824
41 Manatee	283,191,548	156,188,777	127,002,771	127,002,771	53,677,241	2,343,052	183,023,064
42 Marion	247,874,064	78,506,568	169,367,496	169,367,496	43,370,703	815,285	213,553,484
43 Martin	108,709,546	91,665,650	17,043,896	17,043,896	20,575,661	790,109	38,409,666
44 Monroe	50,298,889	45,273,236	5,025,653	5,025,653	9,521,046	464,832	15,011,531
45 Nassau	73,394,815	36,918,002	36,476,813	36,476,813	13,295,577	833,622	50,606,012
46 Okaloosa	192,706,675	76,225,654	116,481,021	116,481,021	34,326,528	2,024,045	152,831,594
47 Okeechobee	40,888,740	8,589,194	32,299,546	32,299,546	6,700,037	93,478	39,093,061
48 Orange	1,236,739,723	567,754,275	668,985,448	668,985,448	239,446,364	10,111,215	918,543,027
49 Osceola	408,680,505	114,951,827	293,728,678	293,728,678	74,872,807	1,590,128	370,191,613
50 Palm Beach	1,163,945,092	801,956,303	361,988,789	361,988,789	220,941,364	12,325,250	595,255,403
51 Pasco	461,682,444	120,257,459	341,424,985	341,424,985	82,204,705	3,250,007	426,879,697
52 Pinellas	583,086,120	342,596,889	240,489,231	240,489,231	109,249,720	4,582,908	354,321,859
53 Polk	622,722,641	151,347,608	471,375,033	471,375,033	111,948,050	4,591,705	587,914,788
54 Putnam	65,849,986	14,860,104	50,989,882	50,989,882	11,226,774	588,299	62,804,955
55 St. Johns	252,551,791	113,108,690	139,443,101	139,443,101	46,731,482	3,380,074	189,554,657
56 St. Lucie	244,283,654	92,199,196	152,084,458	152,084,458	43,937,051	1,751,586	197,773,095
57 Santa Rosa	172,938,255	43,408,672	129,529,583	129,529,583	30,496,461	977,934	161,003,978
58 Sarasota	262,337,696	236,082,889	26,254,807	26,254,807	48,301,477	2,807,651	77,363,935
59 Seminole	391,858,031	142,477,436	249,380,595	249,380,595	71,963,295	2,785,689	324,129,579
60 Sumter	47,929,125	43,136,879	4,792,246	4,792,246	9,033,070	496,774	14,322,090
61 Suwannee	34,027,489	8,164,166	25,863,323	25,863,323	5,761,478	165,967	31,790,768
62 Taylor	16,380,892	5,490,477	10,890,415	10,890,415	2,608,094	63,055	13,561,564
63 Union	15,408,049	1,049,682	14,358,367	14,358,367	2,432,207	7,516	16,798,090
64 Volusia	361,655,314	149,088,500	212,566,814	212,566,814	66,694,879	1,777,741	281,039,434
65 Wakulla	30,633,002	5,616,351	25,016,651	25,016,651	5,198,658	447,417	30,662,726
66 Walton	54,918,376	49,430,416	5,487,960	5,487,960	10,337,008	505,578	16,330,546
67 Washington	23,301,428	3,745,941	19,555,487	19,555,487	3,492,577	90,481	23,138,545
69 FAMU Lab School	4,806,457	0	4,806,457	4,806,457	667,253	2,015	5,475,725
70 FAU Palm Beach	8,345,242	0	8,345,242	8,345,242	1,210,712	117,310	9,673,264
71 FAU St Lucie	8,916,641	0	8,916,641	8,916,641	1,610,991	145,016	10,672,648
72 FSU Broward	4,991,790	0	4,991,790	4,991,790	924,496	70,230	5,986,516
73 FSU Leon	11,398,739	0	11,398,739	11,398,739	1,733,807	174,796	13,307,342
74 UF Lab School	8,147,850	0	8,147,850	8,147,850	1,105,666	115,036	9,368,552
75 Fla Virtual School	190,195,763	0	190,195,763	190,195,763	0	114,275	190,310,038
State	16,966,427,707	7,855,656,386	9,110,771,321	9,110,771,321	3,106,906,805	134,582,877	12,352,261,003

FLORIDA EDUCATION FINANCE PROGRAM
2019-20 - GOVERNOR RECOMMENDED CALCULATION

By District Summary Page 4

District	Required	0.748	Total Local Funding	Total State Funding	Total Funding
	Local Effort Taxes	Discretionary Millage Levy			
	-1-	-2-	-3-	-4-	-5-
1 Alachua	63,833,607	12,224,152	76,057,759	139,216,304	215,274,063
2 Baker	3,937,198	765,339	4,702,537	33,434,096	38,136,633
3 Bay	62,054,311	11,929,228	73,983,539	136,373,080	210,356,619
4 Bradford	4,055,553	767,017	4,822,570	18,406,899	23,229,469
5 Brevard	166,610,926	32,227,818	198,838,744	351,763,618	550,602,362
6 Broward	805,375,668	156,270,039	961,645,707	1,087,378,391	2,049,024,098
7 Calhoun	1,595,523	314,480	1,910,003	15,930,410	17,840,413
8 Charlotte	73,312,262	14,010,621	87,322,883	35,086,814	122,409,697
9 Citrus	39,533,877	7,570,748	47,104,625	65,380,308	112,484,933
10 Clay	46,220,635	9,048,164	55,268,799	225,822,332	281,091,131
11 Collier	263,932,291	70,457,300	334,389,591	87,457,574	421,847,165
12 Columbia	11,669,037	2,170,174	13,839,211	61,136,416	74,975,627
13 Miami-Dade	1,282,584,089	242,572,162	1,525,156,251	1,157,796,341	2,682,952,592
14 DeSoto	7,241,123	1,414,563	8,655,686	28,918,579	37,574,265
15 Dixie	2,133,044	403,418	2,536,462	14,485,991	17,022,453
16 Duval	276,956,411	52,820,855	329,777,266	655,892,073	985,669,339
17 Escambia	78,551,965	14,785,322	93,337,287	200,633,032	293,970,319
18 Flagler	38,708,929	7,269,465	45,978,394	47,808,515	93,786,909
19 Franklin	7,227,075	1,504,132	8,731,207	2,149,432	10,880,639
20 Gadsden	6,279,112	1,171,266	7,450,378	27,102,849	34,553,227
21 Gilchrist	3,225,586	619,604	3,845,190	18,275,739	22,120,929
22 Glades	2,568,600	502,435	3,071,035	11,691,017	14,762,052
23 Gulf	7,614,334	1,468,675	9,083,009	6,001,305	15,084,314
24 Hamilton	3,216,595	639,047	3,855,642	8,639,928	12,495,570
25 Hardee	6,775,318	1,280,429	8,055,747	28,876,652	36,932,399
26 Hendry	8,481,871	1,657,810	10,139,681	44,325,495	54,465,176
27 Hernando	39,544,580	7,511,261	47,055,841	124,835,578	171,891,419
28 Highlands	21,055,836	4,036,331	25,092,167	65,439,522	90,531,689
29 Hillsborough	419,235,198	80,510,379	499,745,577	1,135,819,277	1,635,564,854
30 Holmes	1,984,662	386,797	2,371,459	22,101,782	24,473,241
31 Indian River	73,289,276	14,250,163	87,539,439	45,854,166	133,393,605
32 Jackson	6,200,105	1,147,372	7,347,477	39,858,144	47,205,621
33 Jefferson	2,645,534	493,727	3,139,261	3,684,906	6,824,167
34 Lafayette	1,115,120	215,532	1,330,652	8,308,646	9,639,298
35 Lake	93,192,752	17,846,436	111,039,188	212,968,225	324,007,413
36 Lee	340,581,617	64,955,393	405,537,010	323,422,446	728,959,456
37 Leon	71,046,592	13,522,354	84,568,946	169,970,477	254,539,423
38 Levy	8,123,704	1,560,486	9,684,190	33,250,937	42,935,127
39 Liberty	1,003,265	198,267	1,201,532	9,884,037	11,085,569
40 Madison	2,852,364	550,314	3,402,678	16,176,824	19,579,502
41 Manatee	156,188,777	29,879,592	186,068,369	183,023,064	369,091,433
42 Marion	78,506,568	14,851,521	93,358,089	213,553,484	306,911,573
43 Martin	91,665,650	17,536,037	109,201,687	38,409,666	147,611,353
44 Monroe	45,273,236	21,352,069	66,625,305	15,011,531	81,636,836
45 Nassau	36,918,002	7,048,153	43,966,155	50,606,012	94,572,167
46 Okaloosa	76,225,654	14,300,675	90,526,329	152,831,594	243,357,923
47 Okeechobee	8,589,194	1,660,563	10,249,757	39,093,061	49,342,818
48 Orange	567,754,275	109,821,618	677,575,893	918,543,027	1,596,118,920
49 Osceola	114,951,827	21,399,693	136,351,520	370,191,613	506,543,133
50 Palm Beach	801,956,303	152,326,896	954,283,199	595,255,403	1,549,538,602
51 Pasco	120,257,459	23,165,743	143,423,202	426,879,697	570,302,899
52 Pinellas	342,596,889	66,337,684	408,934,573	354,321,859	763,256,432
53 Polk	151,347,608	29,275,410	180,623,018	587,914,788	768,537,806
54 Putnam	14,860,104	3,047,808	17,907,912	62,804,955	80,712,867
55 St. Johns	113,108,690	21,594,002	134,702,692	189,554,657	324,257,349
56 St. Lucie	92,199,196	17,692,406	109,891,602	197,773,095	307,664,697
57 Santa Rosa	43,408,672	8,170,530	51,579,202	161,003,978	212,583,180
58 Sarasota	236,082,889	47,856,369	283,939,258	77,363,935	361,303,193
59 Seminole	142,477,436	27,284,465	169,761,901	324,129,579	493,891,480
60 Sumter	43,136,879	9,828,323	52,965,202	14,322,090	67,287,292
61 Suwannee	8,164,166	1,550,735	9,714,901	31,790,768	41,505,669
62 Taylor	5,490,477	1,047,138	6,537,615	13,561,564	20,099,179
63 Union	1,049,682	199,990	1,249,672	16,798,090	18,047,762
64 Volusia	149,088,500	28,980,821	178,069,321	281,039,434	459,108,755
65 Wakulla	5,616,351	1,039,602	6,655,953	30,662,726	37,318,679
66 Walton	49,430,416	15,535,274	64,965,690	16,330,546	81,296,236
67 Washington	3,745,941	695,104	4,441,045	23,138,545	27,579,590
69 FAMU Lab School	0	0	0	5,475,725	5,475,725
70 FAU Palm Beach	0	0	0	9,673,264	9,673,264
71 FAU St Lucie	0	0	0	10,672,648	10,672,648
72 FSU Broward	0	0	0	5,986,516	5,986,516
73 FSU Leon	0	0	0	13,307,342	13,307,342
74 UF Lab School	0	0	0	9,368,552	9,368,552
75 Fla Virtual School	0	0	0	190,310,038	190,310,038
State	7,855,656,386	1,546,527,296	9,402,183,682	12,352,261,003	21,754,444,685

Comparison of FEFP School Funding:

(Formula Funding does not include Workforce Development)

	2018-2019 3rd Calculation 1/11/2019	2019-2020 GOVERNOR	VARIANCE GOVERNOR & 3rd Calculation
MAJOR FEFP FORMULA COMPONENTS			
Unweighted FTE	42,975.37	43,319.07	343.70
Weighted FTE	47,742.25	48,102.97	360.72
School Taxable Value	\$ 62,826,665,585	\$ 66,644,898,897	3,818,233,312
Required Local Effort Millage	3.752	3.690	(0.06)
Discretionary Millage	0.748	0.748	-
Total Millage	4.500	4.438	(0.06)
Base Student Allocation	\$ 4,204.42	\$ 4,254.42	50.00
	\$ -	\$ 50.00	
FEFP DETAIL			
WFTE x BSA x DCD(1.0113-2018 & 1.0058-2019)	\$ 201,892,696	\$ 205,837,209	3,944,513
Declining Enrollment Supplement			-
Teacher Salary Increase Allocation / Best and Brightest		6,591,942	6,591,942
Safe Schools	2,402,822	3,040,591	637,769
State Funded Discretionary Contribution			-
.498/.748 Millage Compression			-
Supplemental Academic Instruction	8,771,006	8,858,670	87,664
Reading Instruction Allocation	2,000,293	2,008,391	8,098
ESE Guaranteed Allocation	22,991,371	23,146,048	154,677
Digital Classrooms Allocation/Distance Learning	1,040,039	279,068	(760,971)
DJJ Supplemental Allocation			-
Federally Connected Supplement			-
300 Lowest Performing Allocation			-
Virtual Education Contribution			-
Hope Supplemental Services			-
Mental Health Assistance	1,050,914	1,210,064	159,150
Additional Allocation		119,364	119,364
Teacher Lead Allocation	829,420	835,486	6,066
Student Transportation	6,689,171	6,707,420	18,249
Instructional Materials	3,667,428	3,703,443	36,015
TOTAL FEFP	251,335,160	262,337,696	11,002,536
LOCAL FEFP FUNDS			
Required Local Effort Taxes	226,296,623	236,082,889	9,786,266
	90.04%	89.99%	0%
STATE FEFP FUNDS*	25,038,537	26,254,807	1,216,270
	9.96%	10.01%	0%
Proration to Funds Available			
Proration to Revised Appropriation			
Proration to Prior Year			
CURRENT YEAR NET STATE FEFP FUNDS	25,038,537	26,254,807	1,216,270
Prior Year Adjustments (FTE Audits)	(72,627)		72,627
NET STATE FEFP FUNDS	24,965,910	26,254,807	1,288,897
Adjustment for McKay Scholarships (incl. adj.)	(3,281,421)		3,281,421
ADJUSTED NET STATE FEFP FUNDS	21,684,489	26,254,807	4,570,318
DISTRICT LOTTERY/SCHOOL RECOGNITION	2,806,994	2,807,651	657
STATE CATEGORICAL PROGRAMS			-
Class Size Reduction	47,892,321	48,301,477	409,156
Student Transportation			
Instructional Materials			
Teachers Lead Program			
TOTAL STATE CATEGORICAL PROGRAMS	47,892,321	48,301,477	409,156
TOTAL STATE FUNDING	75,737,852	77,363,935	1,626,083
LOCAL FUNDING			
Total Required Local Effort	226,296,623	236,082,889	9,786,266
.498/.748 Discretionary Local Effort	45,114,572	47,856,369	2,741,797
.25 Discretionary Local Effort			
TOTAL LOCAL FUNDING	271,411,195	283,939,258	12,528,063
TOTAL FUNDING	\$ 347,149,047	\$ 361,303,193	14,154,146
TOTAL FUNDS PER UNWEIGHTED FTE	\$ 8,077.86	\$ 8,340.51	262.65
Change in Funds per unweighted FTE from Last Calc	22.97	262.65	



Sarasota County Schools

Financial Advisory Committee Report

March 22, 2018



Key Findings

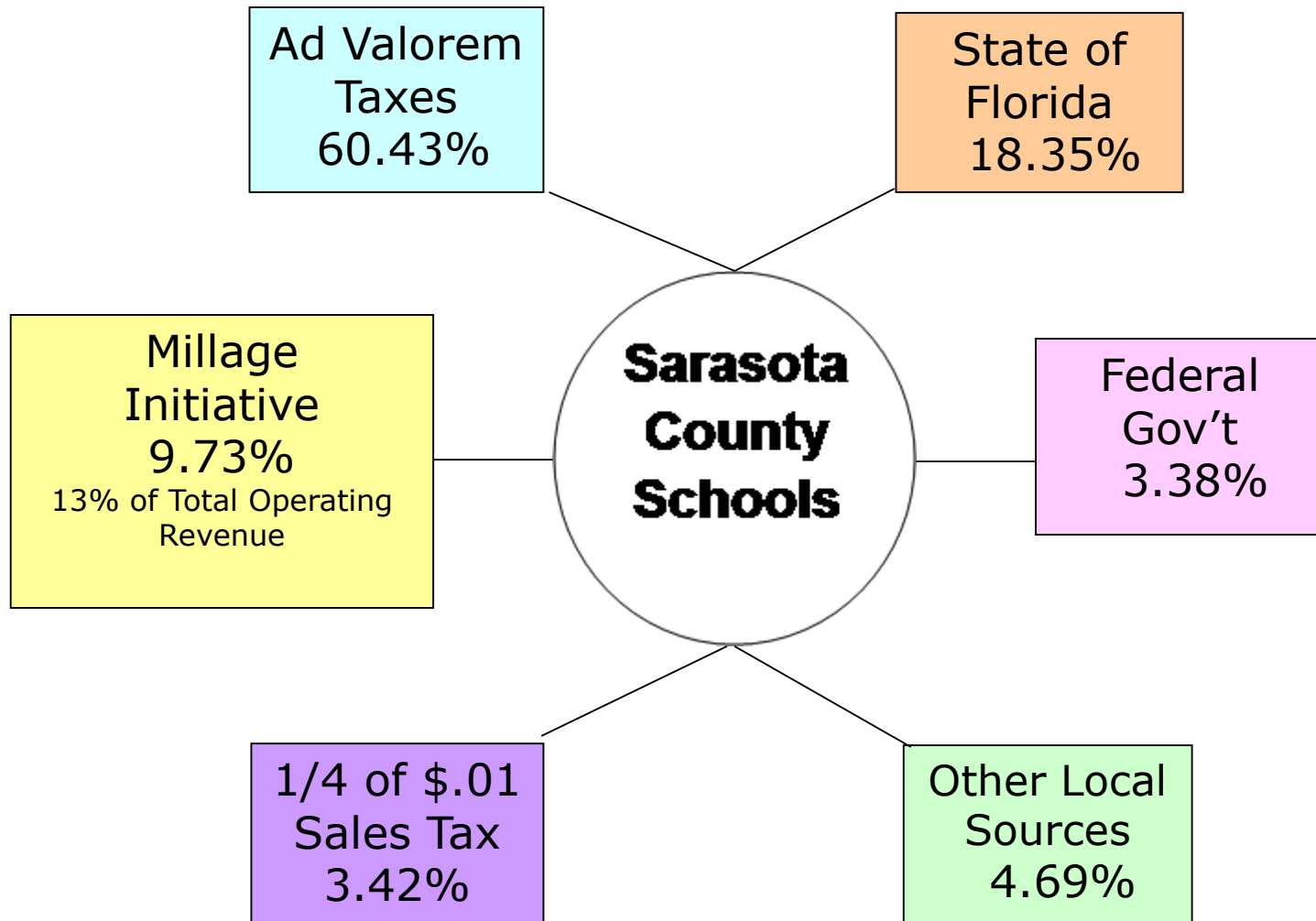
- Educational Quality Measures
- Financial Management
- Operating and Capital Budget



Key Roles

- Provide community oversight for sales tax and voted millage as required by referendum.
- Financial condition monitoring - evaluation of budget and spending
- Good business practices
- Sounding board for policy/provide recommendations to Superintendent and staff
- What do we get for what we spend?

All Funding Sources 2017-2018



Impact of Voted Millage and Sales Tax

	2009-10	2010-11	2011-12	2012-13	2013-14	2014-15	2015-16	2016-17	2017-18
Capital	\$79,619,134	\$76,664,754	\$66,299,873	\$66,696,087	\$67,616,144	\$74,002,082	\$78,086,747	\$92,701,578	\$91,983,999
General Fund	\$324,884,181	\$318,638,970	\$303,055,455	\$303,009,962	\$321,112,553	\$327,264,113	\$347,717,710	\$353,263,257	\$363,957,190
Local Discretionary Revenues:									
Voted Millage	\$47,596,887	\$43,252,762	\$40,610,444	\$40,400,265	\$42,165,204	\$45,101,921	\$48,374,641	\$52,645,268	\$56,505,622
1/4 of 1 Cent Sales Tax	\$12,880,581	\$13,295,558	\$13,860,532	\$14,752,739	\$16,225,321	\$16,712,081	\$18,072,057	\$18,614,219	\$19,844,823
TOTAL	\$464,980,783	\$451,852,044	\$423,826,304	\$424,859,053	\$447,119,222	\$463,080,197	\$492,251,155	\$517,224,322	\$532,291,634

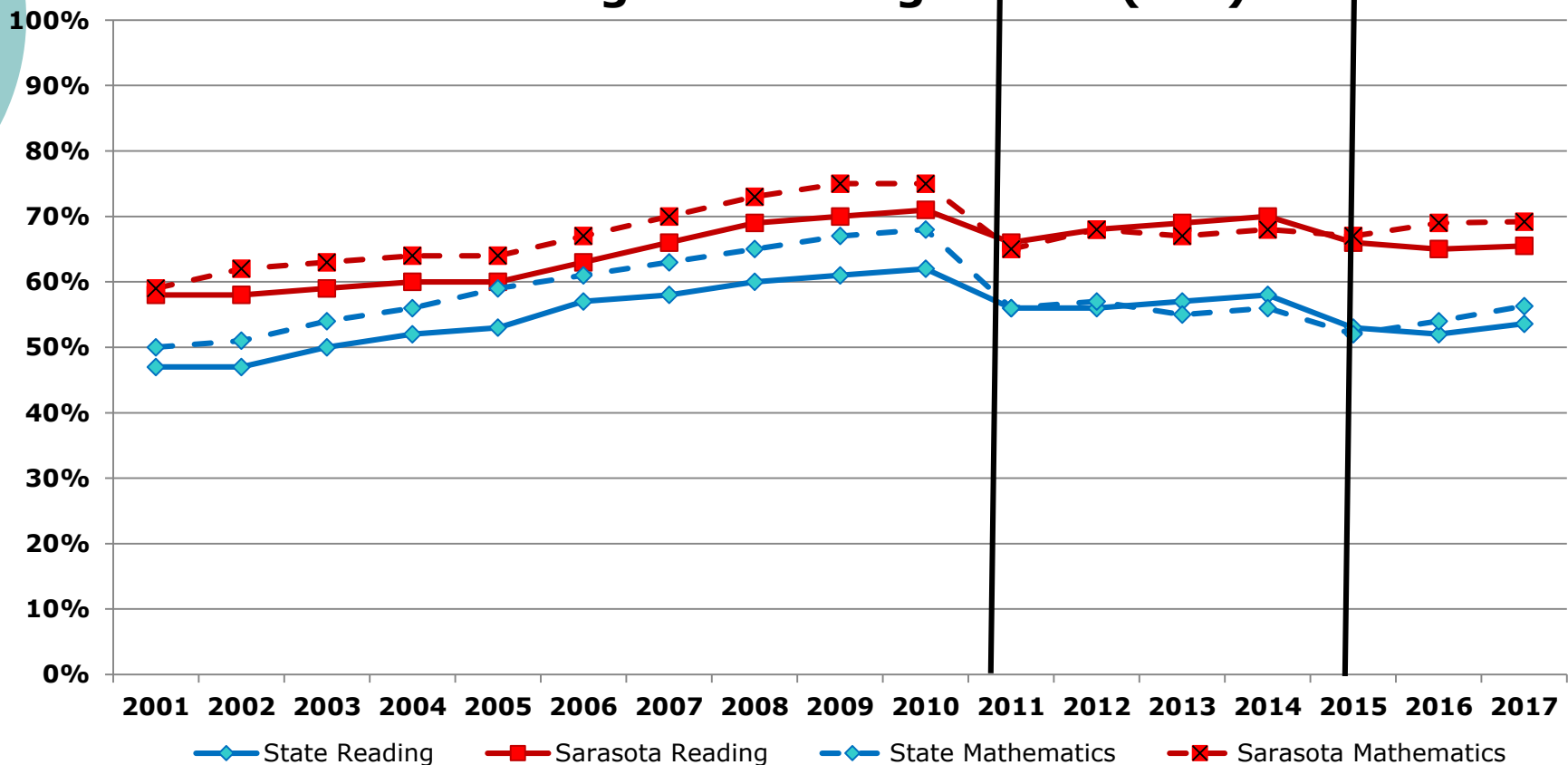


Educational Quality

- Student Achievement:
 - Rated an "A" District
 - 92% "A" or "B" Elementary Schools
 - 75% "A" or "B" Middle Schools
 - 71% "A" or "B" High Schools
 - 2017 FSA ELA Scores: #2 in Florida

Educational Quality

FCAT / FSA Grades 3-10 Sarasota and State Charts Percentage of Passing Scores (3-5)



*Reading is based on Grades 3-10 data and Mathematics is based on Grades 3-8 data

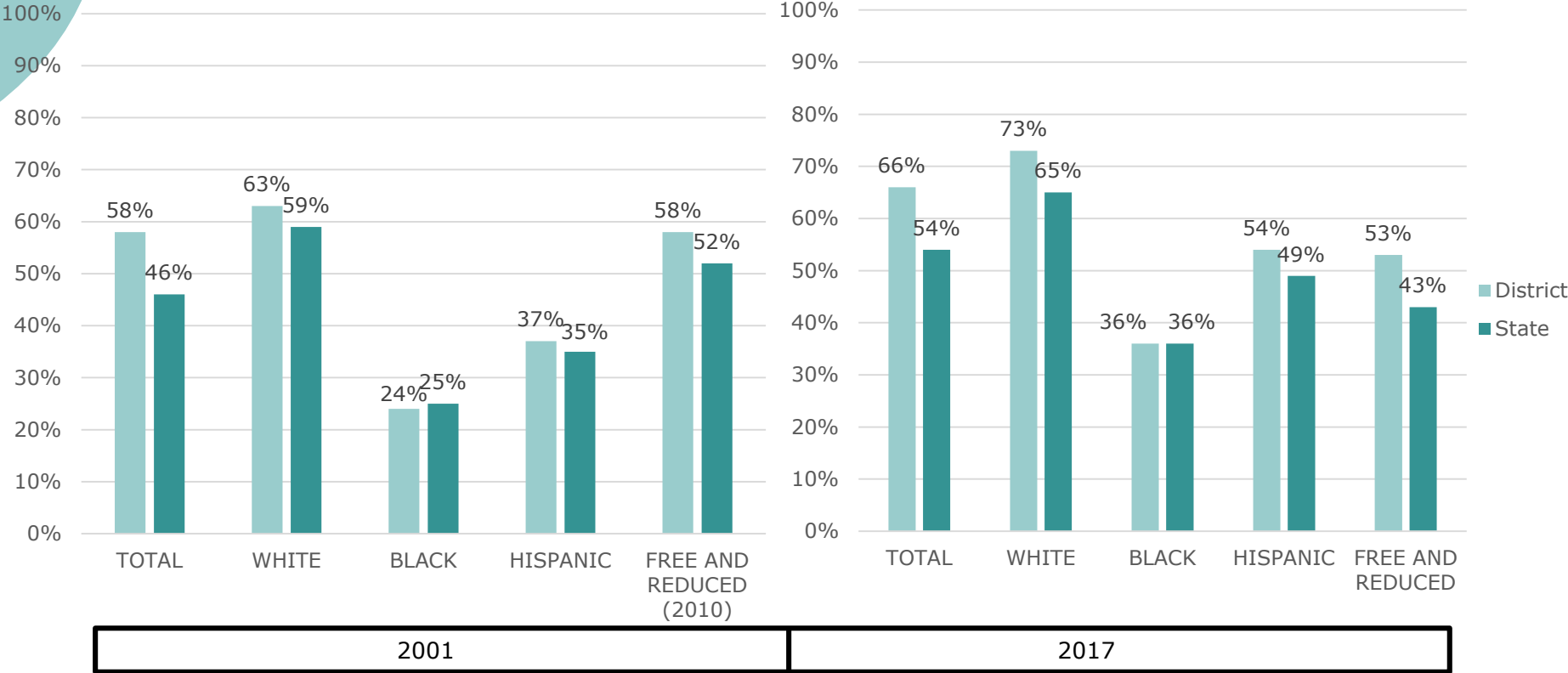
** Data from 2011-2014 is based on the FCAT 2.0

***Data from 2015-2016 is based on the FSA.

Educational Quality

○ Student Achievement (cont'd):

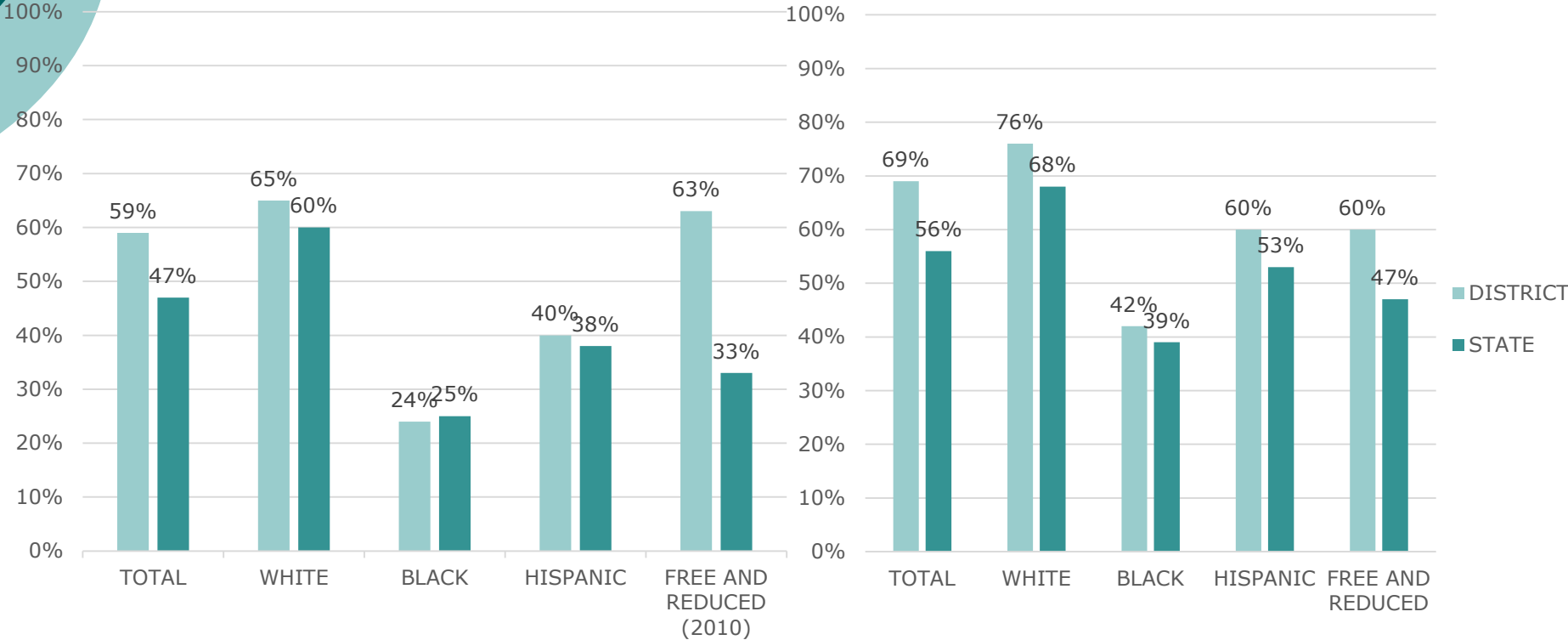
FCAT/FSA Reading/ELA
Percent Level 3 and Above



Educational Quality

○ Student Achievement (cont'd):

FCAT/FSA Math
Percent Level 3 and Above



2001 | 2017

Educational Quality

- Student Achievement (cont'd):
 - SAT Scores* above State and National average:

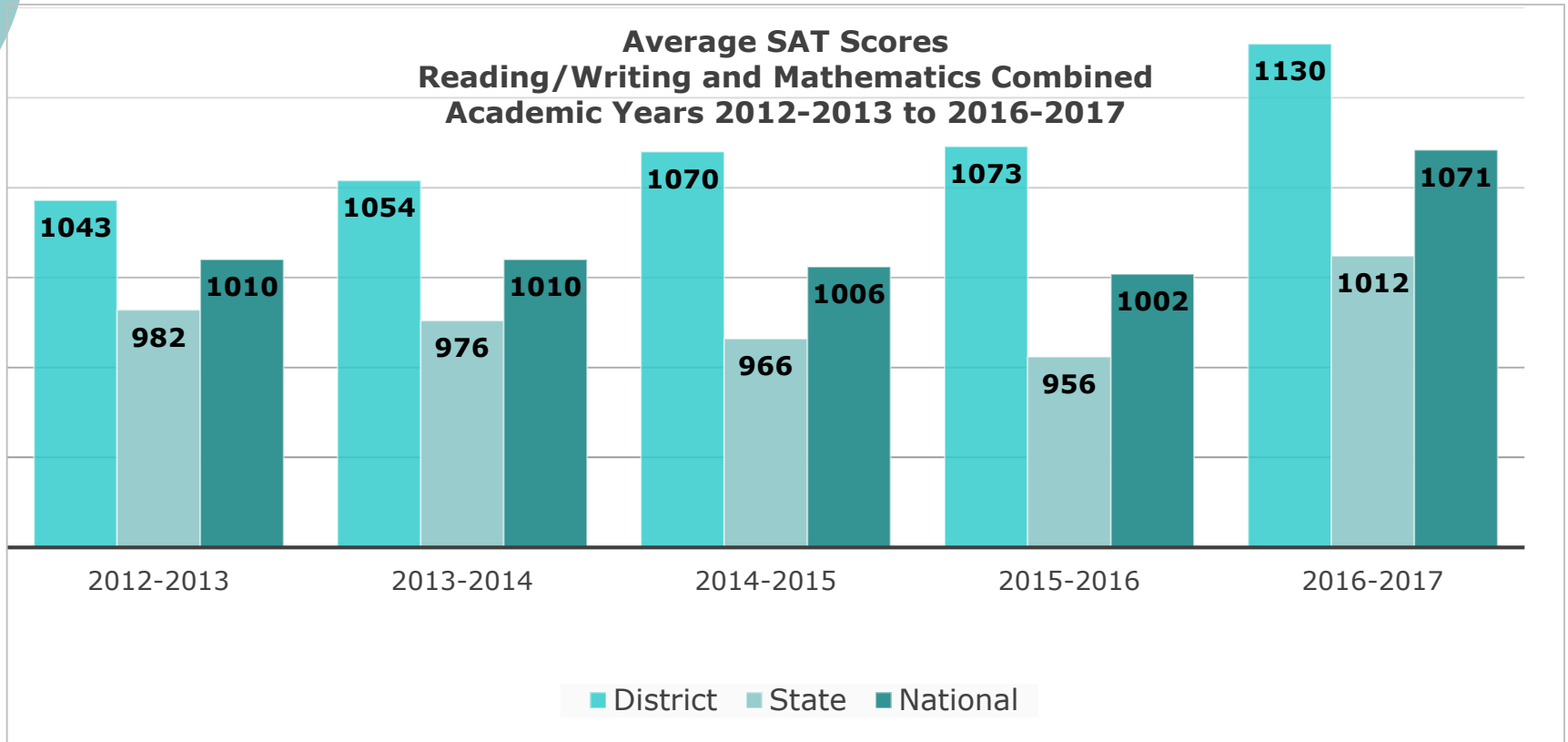
2017	Reading	Math	Total
Sarasota	572	558	1,130
Florida	518	494	1,012
Difference	+54 pts	+64 pts	+118 pts

2017	Reading	Math	Total
Sarasota	572	558	1,130
National	538	533	1,071
Difference	+34 pts	+25 pts	+59 pts

*Writing Scores reflected in previous presentation have been removed as they are subjective and most colleges do not rely upon them in their admission process.

Educational Quality

- Student Achievement (cont'd):
 - SAT Scores above State and National average:



Educational Quality

○ Student Achievement (cont'd):

● Graduation Rates:

	2016	2017	% Increase
Sarasota	85.4%	85.7%	0.3%
Florida	80.7%	82.3%	1.6%
Difference	+4.7%	+3.4%	

● Dropout Rates*:

	2016	2017	% Decrease
Sarasota	3.1%	3.6%	-0.5%
Florida	3.8%	4.0%	-0.2%
Difference	+0.7%	+0.4%	

* Dropout rates are based on percentage of students who drop out of school within four years of their first enrollment in ninth grade



Educational Quality

○ Summary:

- Ranked second in ELA among Florida's sixty seven school districts.
- Ranked fourth in Mathematics among Florida's sixty seven school districts.
- Ranked fifth in Science among Florida's sixty seven school districts.
- One of only two school districts to receive an "A" rating every year since 2004 – first year for District grades.

Economic Considerations

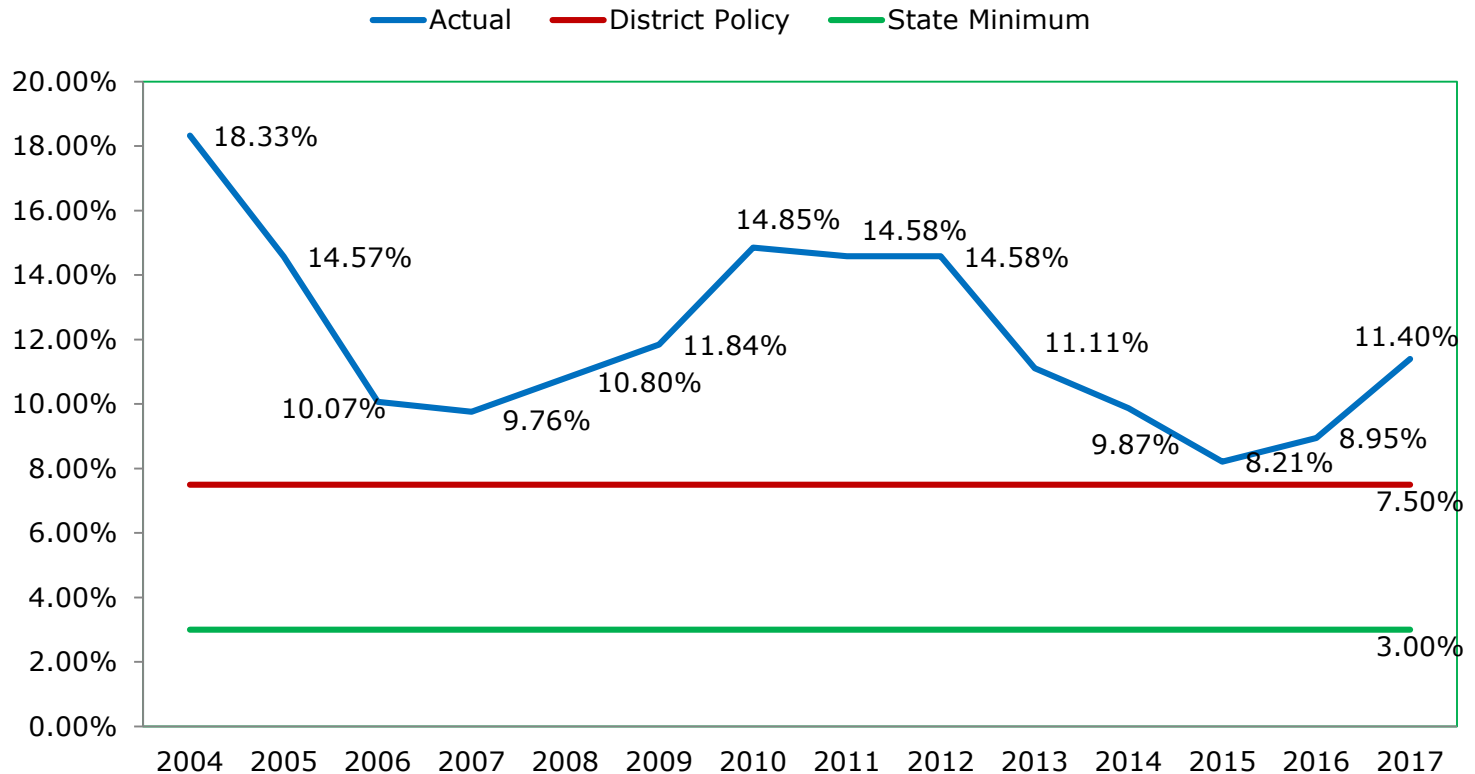
- 2014-2018 Voted Millage Investment Priorities

Investment*	Amount (\$M)	% of Total
Additional teachers and aides no longer supported by State funding formula – Art & Music, Visual Performing Arts, Technology Support, Foreign Language, School Media, School Security, Elementary Science, Guidance Counselors and Behavior Specialists	\$108.8	52.1%
Half hour longer student day began 1/1/2006	\$43.4	21.1%
Program enhancements continued from 2010-2014 voted millage	\$27.4	13.2%
Charter school financial support	\$28.6	13.4%
Summer learning academies (2016-2017)	\$.3	.2%

*Includes roll forward of reserves from previous referendum

Unassigned Reserve Position

General Fund Unassigned Fund Balance as a % of Appropriations and Transfers Out

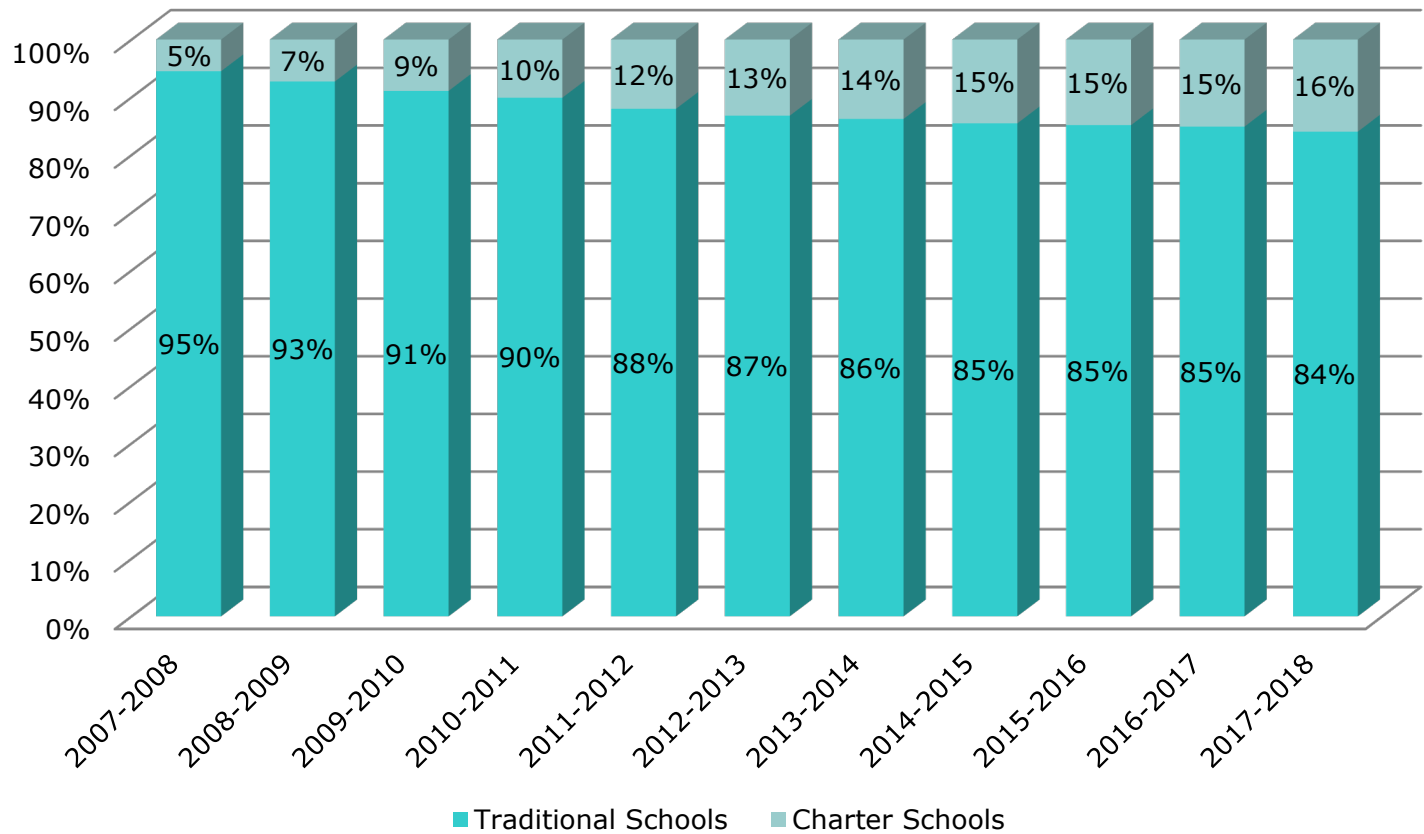


Capital Investments

- Use of COPs funding was prudent and productive
- Strong Bond Rating: AA/AA-/Aa3
- Reinstated Impact Fees / Growth Management Study
- Total Capital Investments 2007-2017: \$1.25 billion
 - Fruitville Classroom Building
 - Riverview High School
 - Woodland Middle School
 - Venice High School
 - Suncoast Technical College / Suncoast Polytechnical High School
 - Bay Haven Cafeteria
 - Atwater Elementary School
 - Booker High School
 - Sarasota High School

Charter School Impact

District Enrollment by School Type



Return on Investment

Investments	Returns
<ul style="list-style-type: none">○ Additional Instruction Time○ Reduced Guidance Counselor Ratios○ Increased school security○ Class Size Compliance○ Technology tools and support○ Maintained Art and Music Programs	<ul style="list-style-type: none">○ FSA Performance is High even with curriculum changes and higher accountability standards○ "A" District○ "A" / "B" Schools○ SAT Scores○ Graduation Rates○ Dropout Rates

- Not "absolute proof" – but strong linkage
- Don't want to prove "negative case"



Summary

- Sarasota County Schools ranks as one of the best districts in Florida
- Voted millage has enabled education quality enhancements. Average annual investment since 2002 - \$46 million
- Decisions to maintain strong reserves have provided critical funding “cushion”
- Flexible financing has funded needed capital projects
- Over 86% of the total operating budget devoted to “people” costs when excluding charter school costs which represent 13%.



Accomplishments

- Expanded Committee to 11 members
- Initiated an Orientation Program
- Expanded Community Outreach
- In addition to the financial oversight and review defined in the Committee's operating procedures, the committee reviewed and made recommendations on:
 - Viability of Self-Insurance
 - Growth Management Study/Impact Fees
 - District Investment Accounts
 - Refunding of outstanding COPs issues



Priorities

- 2018 Referendum Renewal
- Competitive Salaries
- Maintain Financial Reserve Position >7.5%
- Identify & Implement Funding Opportunities
 - COPs Financing and Refunding
- Review Employee Benefits / Financial Impact
 - Reduced Healthcare Costs
- Continuing Evaluation of Charter Schools
- Evaluation of program investments –
Summer Learning Academies, i-Ready, etc.

Priorities

- Community Outreach

- Inform Community on Educational Achievements
- Engage Community on Educational Opportunities
- Outreach Targets:

Business	Community
Greater Sarasota Chamber of Commerce	Tiger Bay Sarasota
Coalition of Business Associations	Tiger Bay Venice
Gulf Coast Builders Exchange	Argus Foundation
Venice Chamber of Commerce	Community Foundations
North Port Chamber of Commerce	Neighborhood Associations
Economic Development Corp.	

By Senator Hutson

7-00621-19

20191028__

1 A bill to be entitled
2 An act relating to school funding; amending s.
3 1002.33, F.S.; requiring that district school boards
4 receive certain funds approved by voter referendum;
5 creating s. 1011.6203, F.S.; conforming provisions to
6 changes made by the act; reenacting s. 1002.333(9)(a),
7 F.S., relating to persistently low-performing schools,
8 to incorporate the amendment made to s. 1002.33, F.S.,
9 in a reference thereto; providing an effective date.

10
11 Be It Enacted by the Legislature of the State of Florida:

12
13 Section 1. Present paragraphs (c) through (h) of subsection
14 (17) of section 1002.33, Florida Statutes, are redesignated as
15 paragraphs (d) through (i), and a new paragraph (c) is added to
16 that subsection, to read:

17 1002.33 Charter schools.—

18 (17) FUNDING.—Students enrolled in a charter school,
19 regardless of the sponsorship, shall be funded as if they are in
20 a basic program or a special program, the same as students
21 enrolled in other public schools in the school district. Funding
22 for a charter lab school shall be as provided in s. 1002.32.

23 (c) District school boards shall receive a proportional
24 share, based on student enrollment, of local funding approved by
25 voter referendum, including referenda authorized by s. 1011.71,
26 for all funds that are not otherwise provided in the Florida
27 Education Finance Program under s. 1011.62 or the General
28 Appropriations Act.

29 Section 2. Section 1011.6203, Florida Statutes, is created

7-00621-19

20191028__

30 to read:

31 1011.6203 Local funding approved by voter referendum.-
32 District school boards shall receive a proportional share, based
33 on student enrollment, of local funding approved by voter
34 referendum, including referenda authorized by s. 1011.71, for
35 all funds that are not otherwise provided in the Florida
36 Education Finance Program under s. 1011.62 or the General
37 Appropriations Act.

38 Section 3. For the purpose of incorporating the amendment
39 made by this act to section 1002.33, Florida Statutes, in a
40 reference thereto, paragraph (a) of subsection (9) of section
41 1002.333, Florida Statutes, is reenacted to read:

42 1002.333 Persistently low-performing schools.-

43 (9) FUNDING.-

44 (a) Schools of hope shall be funded in accordance with s.
45 1002.33(17).

46 Section 4. This act shall take effect July 1, 2019.